

# **TWR Lighting, Inc.** HARK<sup>®</sup>

*Enlightened Technology<sup>®</sup>*

10810 W. LITTLE YORK RD., #130 HOUSTON, TX 77041-4051  
VOICE (713) 973-6905 FAX (713) 973-9352  
web: [www.twrlighting.com](http://www.twrlighting.com)

## **IMPORTANT!!!**

**PLEASE TAKE THE TIME TO FILL OUT THIS FORM COMPLETELY. FILE IT IN A SAFE PLACE. IN THE EVENT YOU EXPERIENCE PROBLEMS WITH OR HAVE QUESTIONS CONCERNING YOUR CONTROLLER, THE FOLLOWING INFORMATION IS NECESSARY TO OBTAIN PROPER SERVICE AND PARTS.**

<b>MODEL #</b>	<u>AA0</u>
<b>TYPE</b>	<u>INCANDESCENT</u>
<b>SERIAL #</b>	<u></u>
<b>PURCHASE DATE</b>	<u></u>
<b>PURCHASED FROM</b>	<u></u>



*Enlightened Technology®*

## **AA0 CONTROLLER**

---

### **TABLE OF CONTENTS**

**APPENDIX**

**WARRANTY & RETURN POLICY**

**RETURN MERCHANDISE AUTHORIZATION (RMA) FORM**

# **TWR Lighting, Inc.** **MARK**

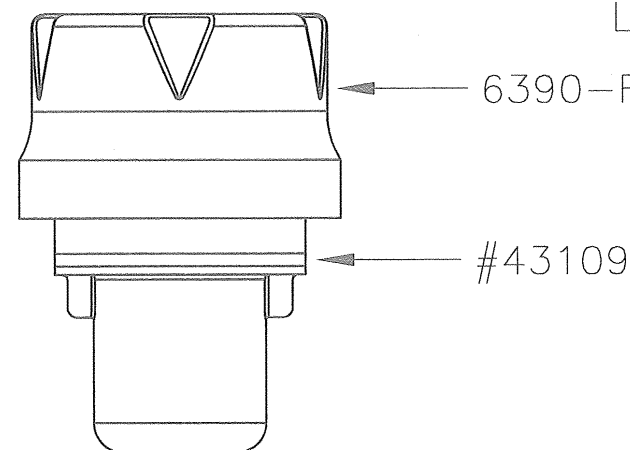
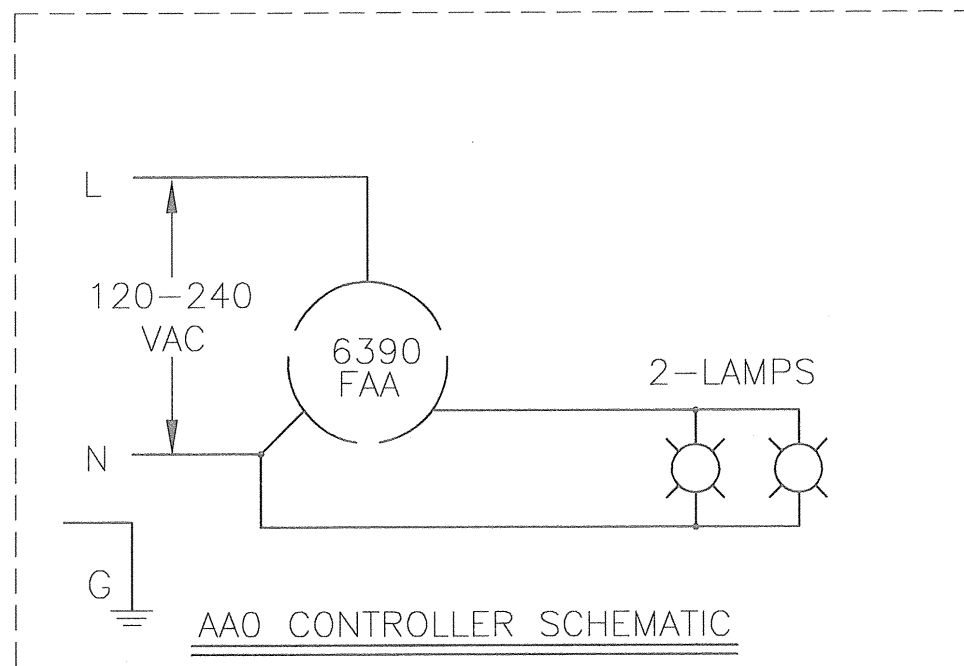
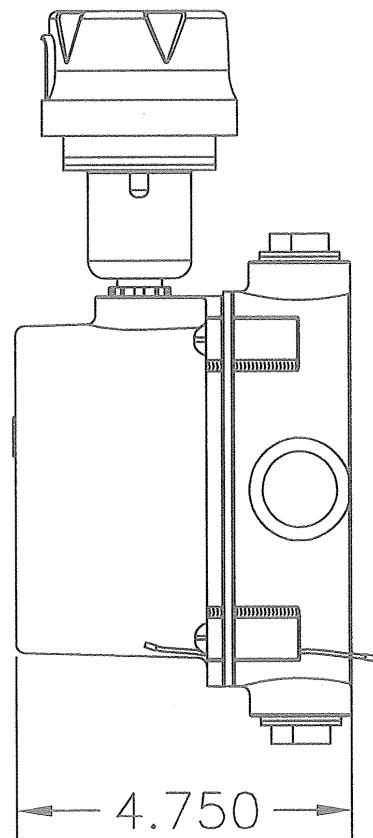
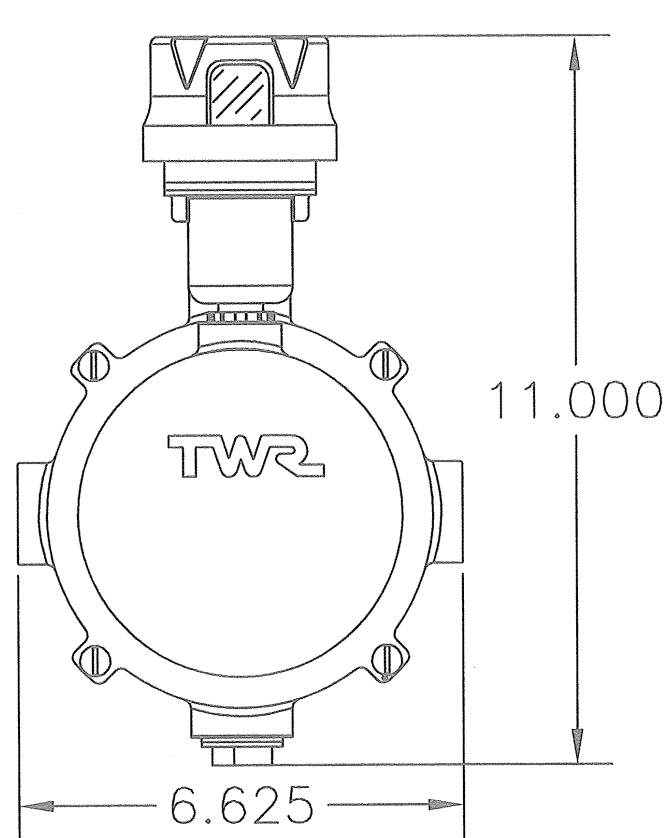
*Enlightened Technology®*

## **AA0 CONTROLLER**

---

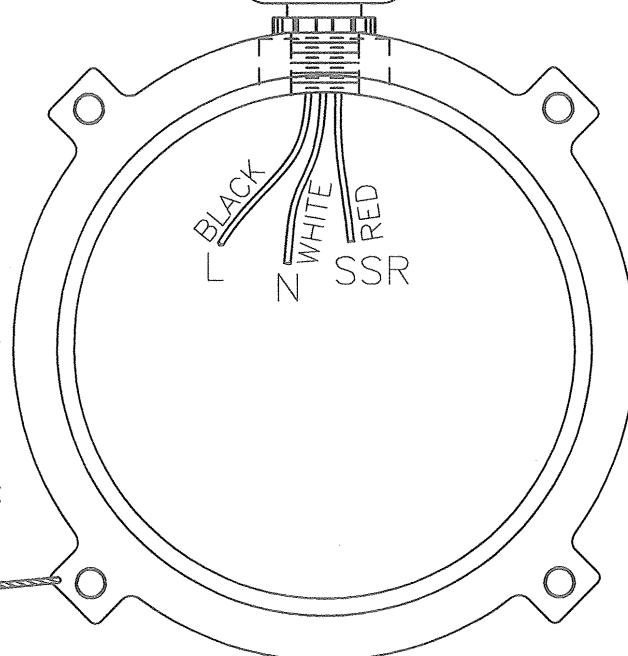
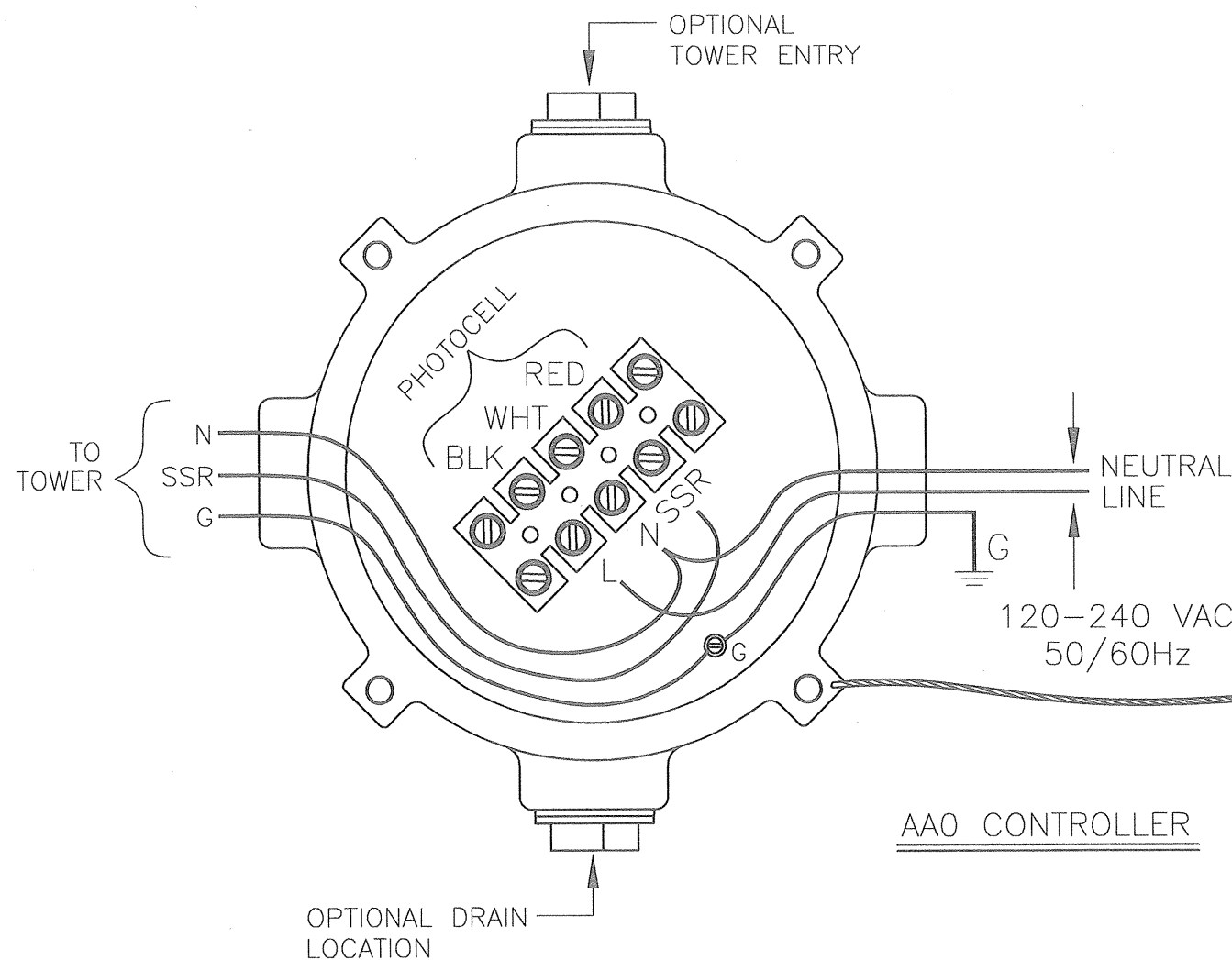
### **APPENDIX**

<b>CHASSIS LAYOUT &amp; SCHEMATIC .....</b>	<b>201-R (REV F)</b>
<b>OL-2 SIDELIGHT ASSEMBLY DETAIL.....</b>	<b>310 (REV B)</b>
<b>SIDELIGHT RECEPTACLE WIRING.....</b>	<b>274-S (REV A)</b>
<b>JUNCTION AND STRAIN RELIEF BOXES .....</b>	<b>100089 (REV A)</b>
<b>LK1A0 LIGHTING KIT w/NON-ALARMED .....</b>	<b>259-01 (REV D)</b>
<b>LK2A0 LIGHTING KIT w/NON-ALARMED .....</b>	<b>259-02 (REV D)</b>
<b>LIGHTING KIT w/CABLE FOR OL2 LIGHT .....</b>	<b>T1033 (REV E)</b>
<b>WRAPLOCK FASTENING DETAIL .....</b>	<b>100984</b>



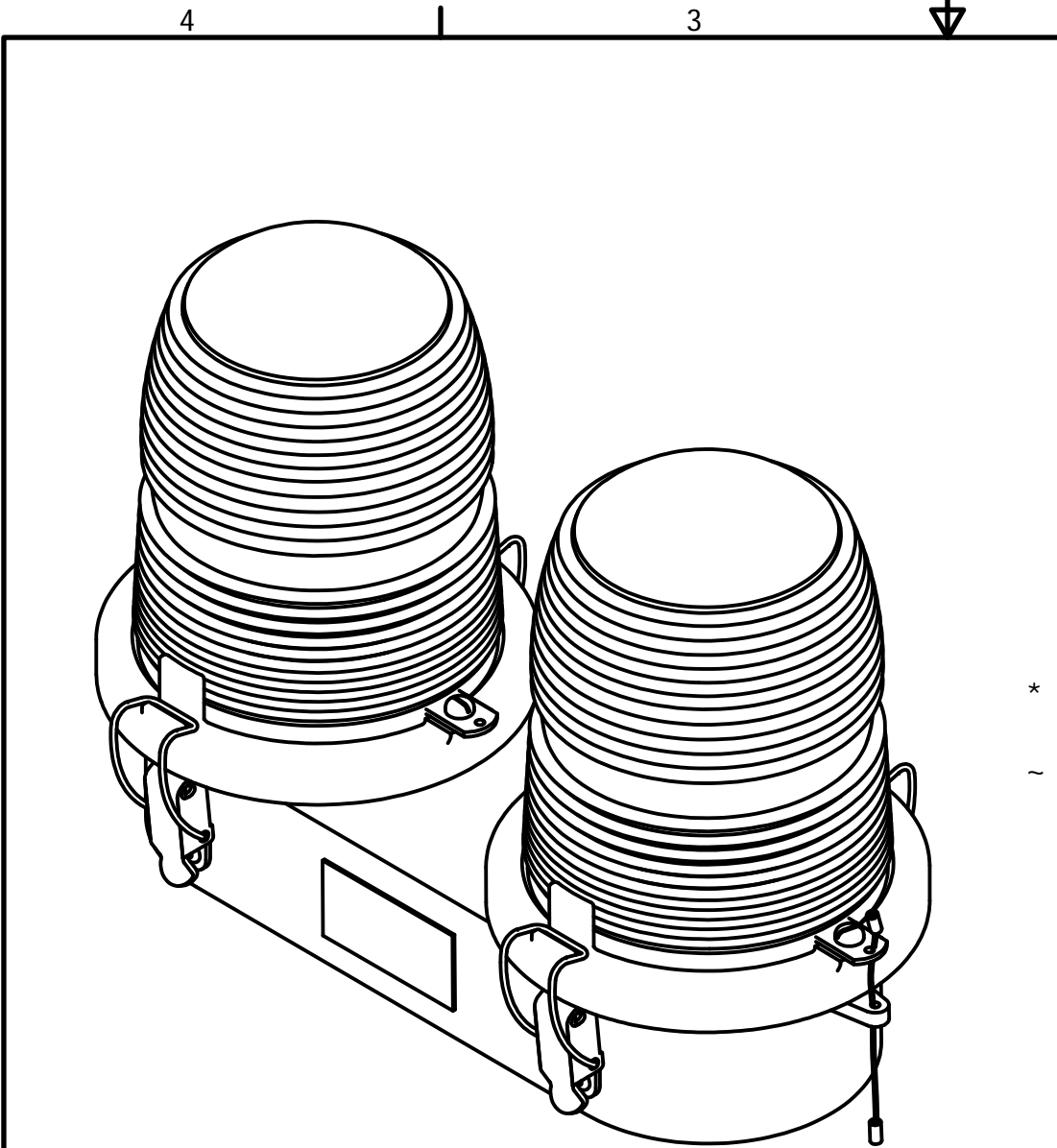
# NOTES:

- 1) PLUG 6390-FAA PHOTOCELL INTO (#43109) TWIST LOCK RECEPTACLE AND TWIST TO LOCK.



AA0 CONTROLLER			
120-240 VAC 50/60Hz			
PROD. DEPT.	TWR Lighting, Inc. <b>WARK</b>		
SERV. DEPT.	Enlightened Technology		
ENGINEER	G.D. SEBEK		
DRAWN BY	G.D. SEBEK		
DATE	11/13/92	SCALE	N.T.S.
SHEET SIZE		SHEET QTY.	
B		1 OF 1	
DWG. NO.		201-R	
<small>The use of non-OEM parts or modifications to original equipment design will void the manufacturer warranty and could invalidate the assurance of complying with FAA requirements as published in Advisory Circular 150/5345-43.</small>			
<small>NOTICE: The drawings and photographic images contained herein are the sole property of TWR Lighting, Inc. All information contained herein that is not generally known shall be considered confidential except to the extent the information has been previously established. The drawings and photographic images contained herein may not be reproduced, copied or used as the basis for manufacture or sale or promotion or any other purpose without the expressed written permission of TWR Lighting, Inc.</small>			

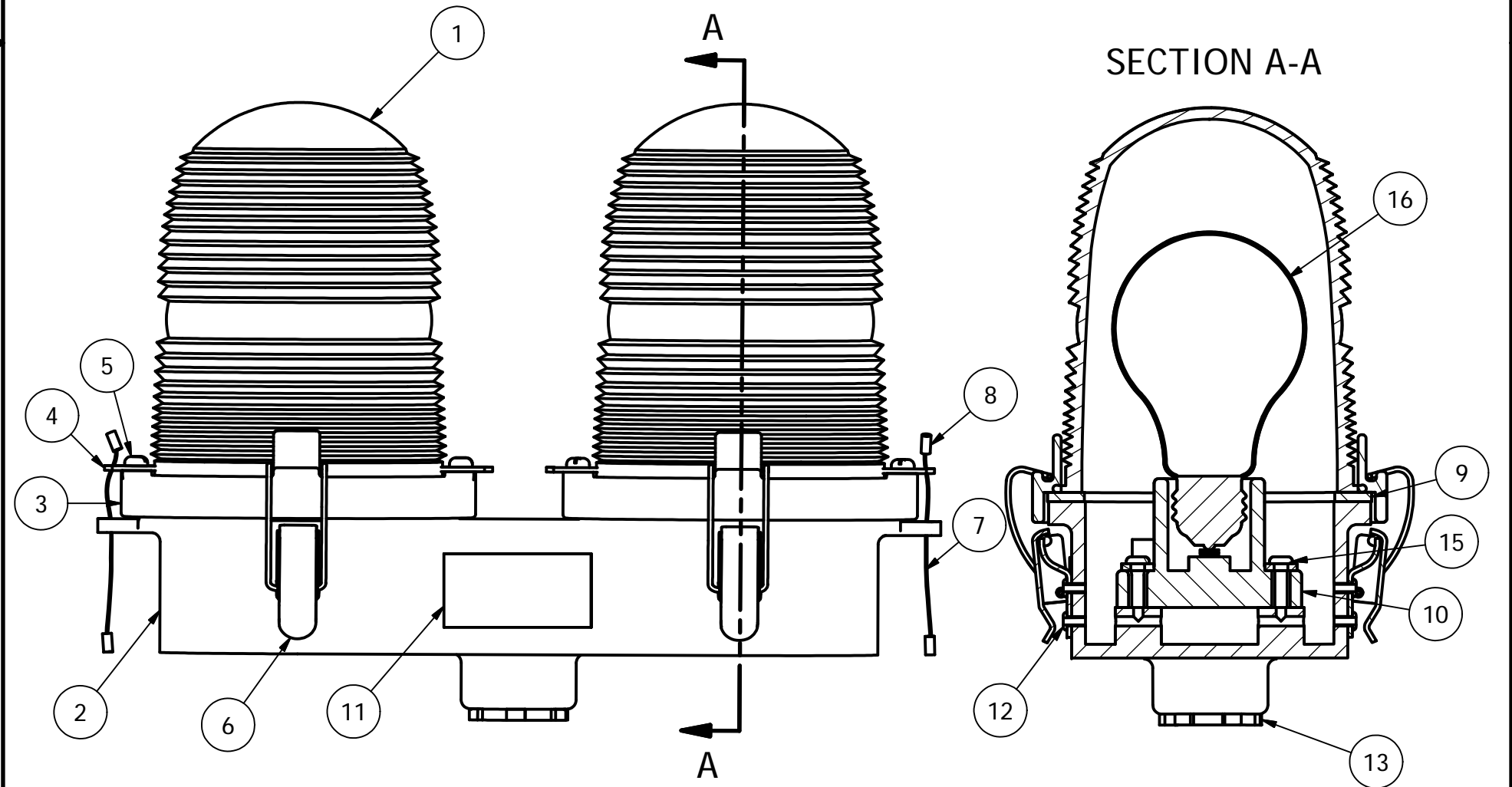
09/17/2015	(F)	ADDED NOTES
DATE:	LTR.	REVISION



PARTS LIST			
ITEM	QTY	PART NUMBER	DESCRIPTION
1	2	AP35222	RED SIDELIGHT GLASS
2	1	OL2C	DOUBLE SIDELIGHT BODY
3	2	106C	LENS HOLDER RING
4	4	12V245	OL LENS CLIP
5	4	832X14PH	8-32 X 1/4 PH SS SLOT SCREW
6	4	HC255SS	SIDELIGHT LATCHES
7	2	7X7SS	1/16 HOL 7X7 S.S. WIRE
8	4	A1A	STAKON CRIMP
9	2	OLG	OL GASKET
10	2	TWR19062	SIDELIGHT RECEPTACLE
11	1	100324	OL2 SERIAL NUMBER LABEL
12	8	18PRSS	1/8 X .40 SS POP RIVET
13	1	A314	3/4" CONDUIT LOCKNUT GALV.
* 14	4	104G	WHITE TEFLON WASHER
15	4	832X34PH	8-32 X 3/4" S.S. PH SLOT
~ 16	2	116A21TS	116W-120V LAMP (TYP.)

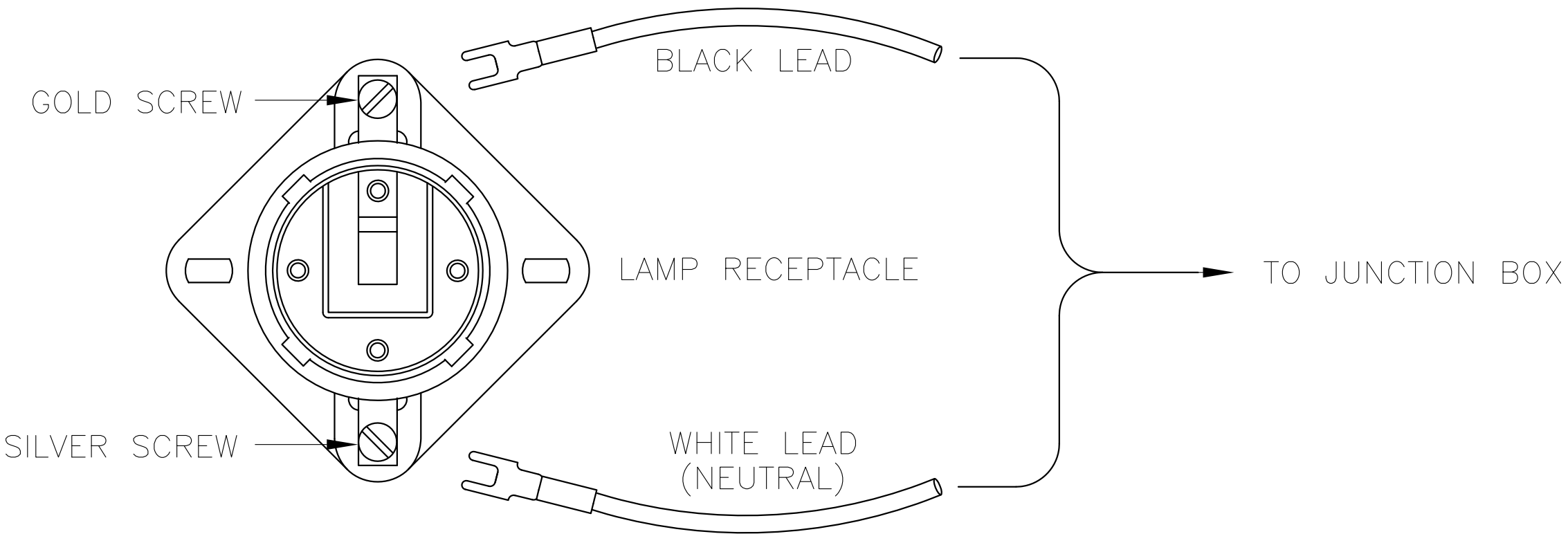
\* = PART NOT SHOWN  
~ = PART SOLD SEPARATELY

NOTE:  
1. FAA APPROVED LIGHT USES THE 116A21TS LAMP.  
OTHER LAMPS ARE AVAILABLE TO MEET YOUR APPLICATION.



DRAWN	2/13/2012
vhernandez	
CHECKED	
QA	
MFG	
APPROVED	

<i>TWR Lighting, Inc.</i> <i>Enlightened Technology</i>			
TITLE 3/4" OL2 SIDELIGHT ASSEMBLY DETAIL (PART#OL2)			
SIZE B	DWG NO 310	REV B	
SCALE 2/3	SHEET 1 OF 1		

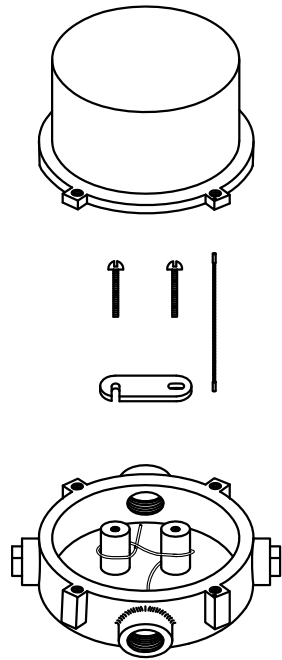
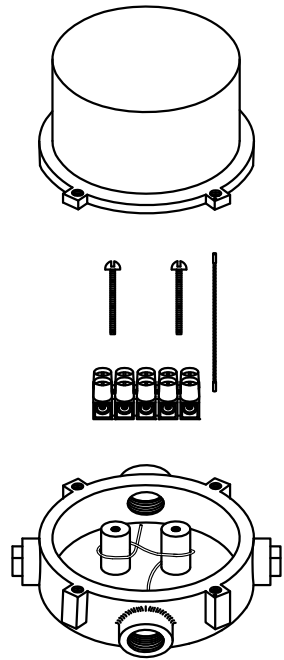


SIDELIGHT RECEPTACLE WIRING

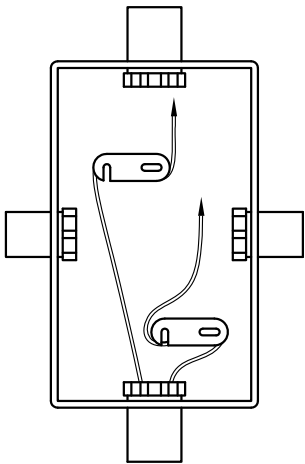
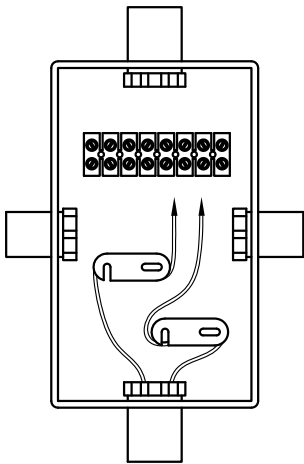
PROD DEPT	<b>TWR Lighting, Inc.</b> <i>Enlightened Technology®</i> <b>WARK®</b>		
SERV DEPT			
ENGINEER			
DRAWN BY G.D. SEBEK		SHEET SIZE B	SHEET QTY. 1 OF 1
DATE 06/08/91	SCALE N.T.S.	DWG. NO.	274-S

7/2/98	<b>A</b>	G.D.S.	CHANGED LABEL
DATE:	LTR.		REVISION

NOTICE: The use of non-OEM parts or modifications to original equipment design will void the manufacturer warranty and could invalidate the assurance of complying with FAA requirements as published in Advisory Circular 150/5345-43. The drawings and photographic images contained herein are the sole property of TWR Lighting, Inc. All information contained herein that is not generally known shall be considered confidential except to the extent the information has been previously established. The drawings and photographic images contained herein may not be reproduced, copied or used as the basis for manufacture or sale or promotion or any other purpose without the expressed written permission of TWR Lighting, Inc.



JB-5 AND JB-0  
3/4" JUNCTION BOX



JB-8 AND JB-8SR  
1" JUNCTION BOX

NOTES:

- 1) DRAWING ILLUSTRATES METHOD OF STRAIN RELIEVING WIRE. USE THIS METHOD ON ALL JUNCTION BOXES.
- 2) THE NATIONAL ELECTRICAL CODE-ARTICLE 300-19-B3 REQUIRES CONDUCTORS IN A VERTICAL CONDUIT BE SUPPORTED TO RELIEVE STRAIN ON TERMINAL BLOCK CONNECTIONS.
- 3) SKETCH ILLUSTRATES METHOD OF STRAIN RELIEVING A SINGLE CONDUCTOR. SEVERAL CONDUCTORS MAY BE GROUPED TOGETHER.
- 4) CONDUCTORS MAY BE MIXED BUT SHOULD NOT TAKE UP MORE THAN 40% OF CONDUIT'S INSIDE AREA.

USING THIS JUNCTION BOX METHOD SPACING IS 100 FEET MAXIMUM.

AWG WIRE SIZE	MAX. NUMBER WIRES IN 3/4" CONDUIT	MAX. NUMBER WIRES IN 1" CONDUIT	WIRE AREA SQ. INCHES	WEIGHT PER 100 FEET
12 THHN	16	26	0.0117	2.50
10 THHN	10	17	0.0184	4.10
8 THHN	6	9	0.0373	6.70
6 THHN	4	7	0.0519	10.30
4 THHN	2	4	0.0845	16.20

JUNCTION AND STRAIN RELIEF BOXES

PROD DEPT

SERV DEPT

ENGINEER

**TWR Lighting, Inc.**  
Enlightened Technology®

DRAWN BY  
G.D. SEBEK

DATE  
07/26/93

SCALE  
N.T.S.

SHEET SIZE  
B

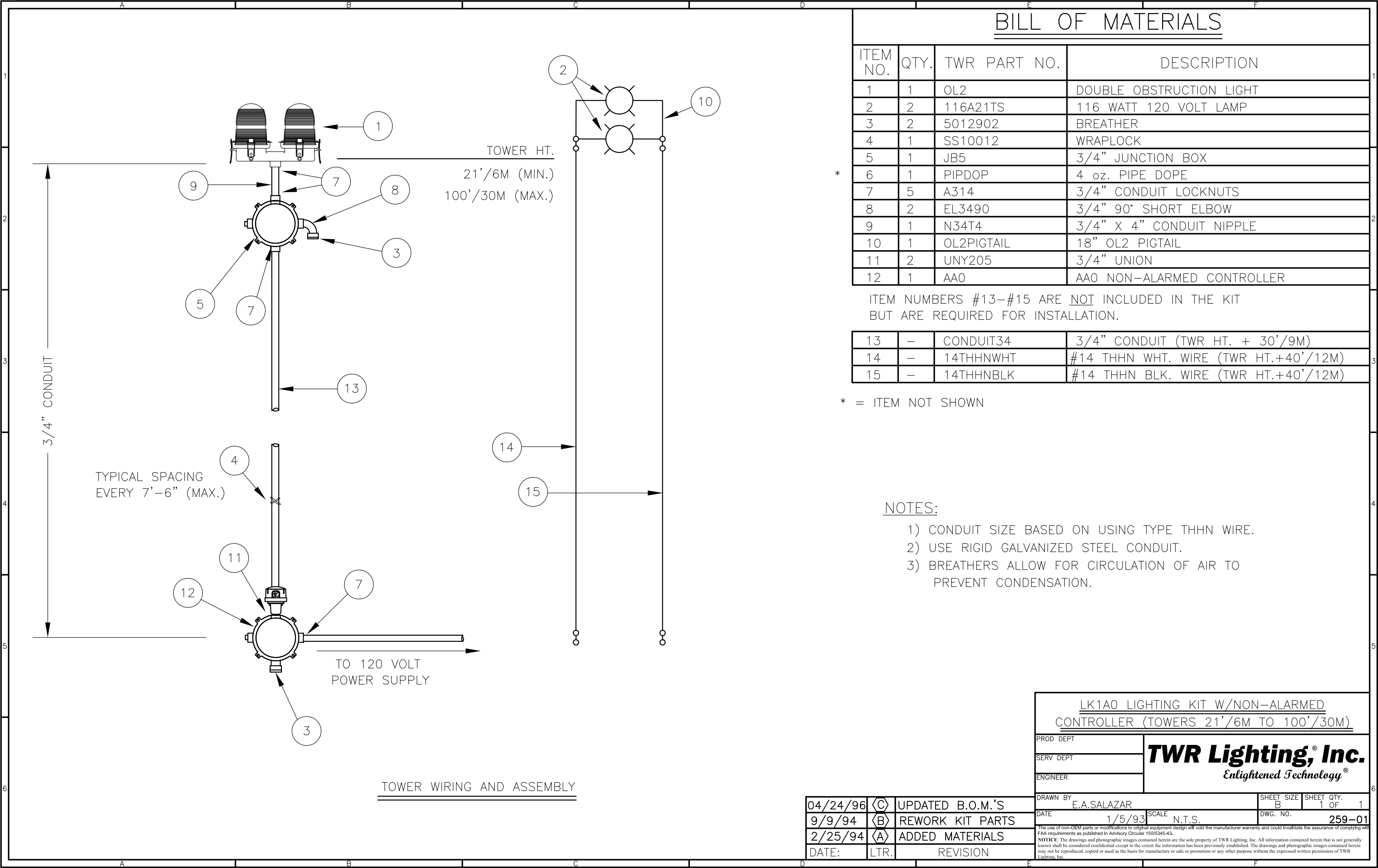
SHEET QTY.  
1 OF 1

DWG. NO.  
100089

9/29/00 **(A)** 3 UPDATED NOTES

DATE: LTR. REVISION

The use of non-TWR parts or modifications to original equipment design will void the manufacturer warranty and could invalidate the assurance of complying with FAA requirements as published in Advisory Circular 150/5345-43.  
**NOTICE:** The drawings and photographic images contained herein are the sole property of TWR Lighting, Inc. All information contained herein that is not generally known shall be considered confidential except to the extent the information has been previously established. The drawings and photographic images contained herein may not be reproduced, copied or used as the basis for manufacture or sale or promotion or any other purpose without the expressed written permission of TWR Lighting, Inc.



BILL OF MATERIALS

ITEM NO.	QTY.	TWR PART NO.	DESCRIPTION
1	1	OL2	DOUBLE OBSTRUCTION LIGHT
2	2	116A21TS	116 WATT 120 VOLT LAMP
3	2	5012902	BREATHER
4	1	SS10012	WRAPLOCK
5	1	JB5	3/4" JUNCTION BOX
6	1	PIPDOP	4 oz. PIPE DOPE
7	5	A314	3/4" CONDUIT LOCKNUTS
8	2	EL3490	3/4" 90° SHORT ELBOW
9	1	N34T4	3/4" X 4" CONDUIT NIPPLE
10	1	OL2PIGTAIL	18" OL2 PIGTAIL
11	2	UNY205	3/4" UNION
12	1	AA0	AA0 NON-ALARMED CONTROLLER

ITEM NUMBERS #13-#15 ARE NOT INCLUDED IN THE KIT BUT ARE REQUIRED FOR INSTALLATION.

13	-	CONDUIT34	3/4" CONDUIT (TWR HT. + 30'/9M)
14	-	14THHNWHT	#14 THHN WHT. WIRE (TWR HT.+40'/12M)
15	-	14THHNBK	#14 THHN BLK. WIRE (TWR HT.+40'/12M)

\* = ITEM NOT SHOWN

NOTES:

- 1) CONDUIT SIZE BASED ON USING TYPE THHN WIRE.
- 2) USE RIGID GALVANIZED STEEL CONDUIT.
- 3) BREATHERS ALLOW FOR CIRCULATION OF AIR TO PREVENT CONDENSATION.

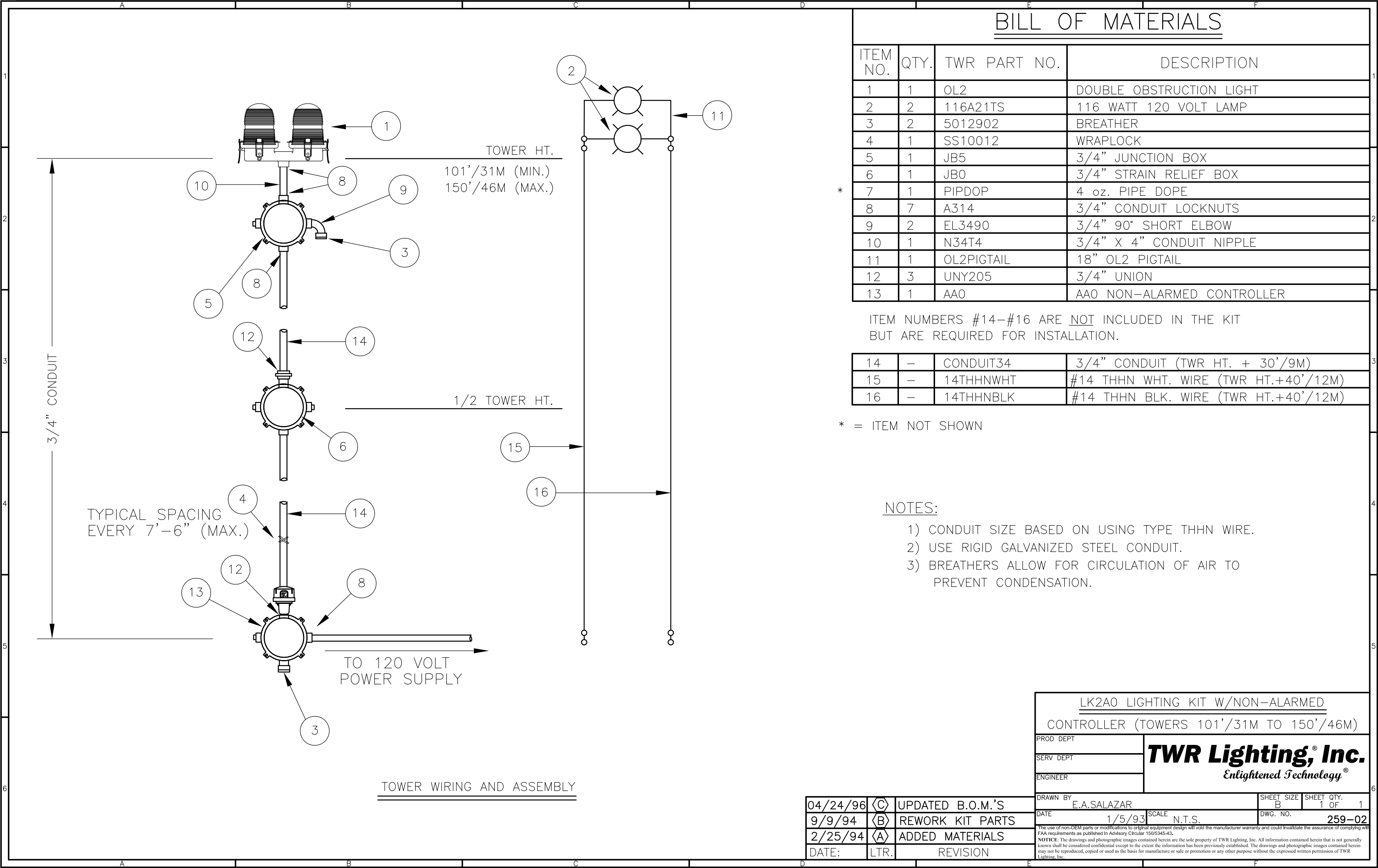
LK1A0 LIGHTING KIT W/NON-ALARMED CONTROLLER (TOWERS 21'/6M TO 100'/30M)

PROD DEPT	<b>TWR Lighting, Inc.</b> Enlightened Technology®
SERV DEPT	
ENGINEER	

04/24/96	C	UPDATED B.O.M.'S
9/9/94	B	REWORK KIT PARTS
2/25/94	A	ADDED MATERIALS
DATE:	LTR.	REVISION

DRAWN BY E.A.SALAZAR	SHEET SIZE B	SHEET QTY. 1 OF 1
DATE 1/5/93	SCALE N.T.S.	DWG. NO. 259-01
<small>The use of non-OEM parts or modifications to original equipment design will void the manufacturer warranty and could invalidate the assurance of complying with FAA requirements as published in Advisory Circular 150/5345-43. NOTICE: The drawings and photographic images contained herein are the sole property of TWR Lighting, Inc. All information contained herein that is not generally known shall be considered confidential except to the extent the information has been previously established. The drawings and photographic images contained herein may not be reproduced, copied or used as the basis for manufacture or sale or promotion or any other purpose without the expressed written permission of TWR Lighting, Inc.</small>		





BILL OF MATERIALS

ITEM NO.	QTY.	TWR PART NO.	DESCRIPTION
1	1	OL2	DOUBLE OBSTRUCTION LIGHT
2	2	116A21TS	116 WATT 120 VOLT LAMP
3	2	5012902	BREATHER
4	1	SS10012	WRAPLOCK
5	1	JB5	3/4" JUNCTION BOX
6	1	JB0	3/4" STRAIN RELIEF BOX
7	1	PIPDOP	4 oz. PIPE DOPE
8	7	A314	3/4" CONDUIT LOCKNUTS
9	2	EL3490	3/4" 90° SHORT ELBOW
10	1	N34T4	3/4" X 4" CONDUIT NIPPLE
11	1	OL2PIGTAIL	18" OL2 PIGTAIL
12	3	UNY205	3/4" UNION
13	1	AA0	AA0 NON-ALARMED CONTROLLER

ITEM NUMBERS #14-#16 ARE NOT INCLUDED IN THE KIT BUT ARE REQUIRED FOR INSTALLATION.

14	-	CONDUIT34	3/4" CONDUIT (TWR HT. + 30'/9M)
15	-	14THHNWHT	#14 THHN WHT. WIRE (TWR HT.+40'/12M)
16	-	14THHNBK	#14 THHN BLK. WIRE (TWR HT.+40'/12M)

\* = ITEM NOT SHOWN

NOTES:

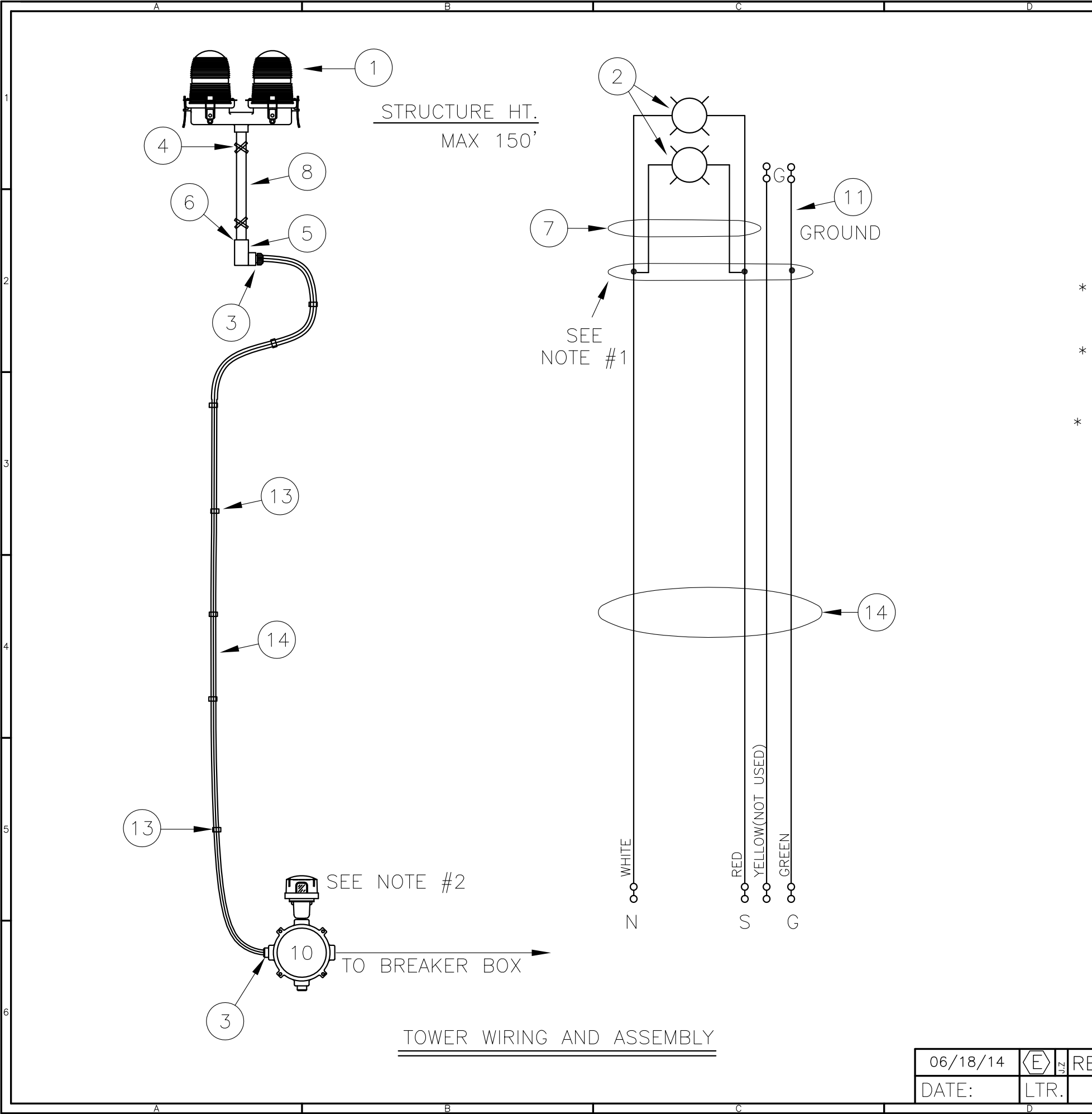
- 1) CONDUIT SIZE BASED ON USING TYPE THHN WIRE.
- 2) USE RIGID GALVANIZED STEEL CONDUIT.
- 3) BREATHERS ALLOW FOR CIRCULATION OF AIR TO PREVENT CONDENSATION.

LK2A0 LIGHTING KIT W/NON-ALARMED  
CONTROLLER (TOWERS 101'/31M TO 150'/46M)

PROD DEPT	<b>TWR Lighting, Inc.</b> <i>Enlightened Technology®</i>
SERV DEPT	
ENGINEER	

04/24/96	C	UPDATED B.O.M.'S
9/9/94	B	REWORK KIT PARTS
2/25/94	A	ADDED MATERIALS
DATE:	LTR.	REVISION

DRAWN BY E.A.SALAZAR	SHEET SIZE B	SHEET QTY. 1 OF 1
DATE 1/5/93	SCALE N.T.S.	DWG. NO. 259-02
<small>The use of non-OEM parts or modifications to original equipment design will void the manufacturer warranty and could invalidate the assurance of complying with FAA requirements as published in Advisory Circular 150/5345-43. NOTICE: The drawings and photographic images contained herein are the sole property of TWR Lighting, Inc. All information contained herein that is not generally known shall be considered confidential except to the extent the information has been previously established. The drawings and photographic images contained herein may not be reproduced, copied or used as the basis for manufacture or sale or promotion or any other purpose without the expressed written permission of TWR Lighting, Inc.</small>		



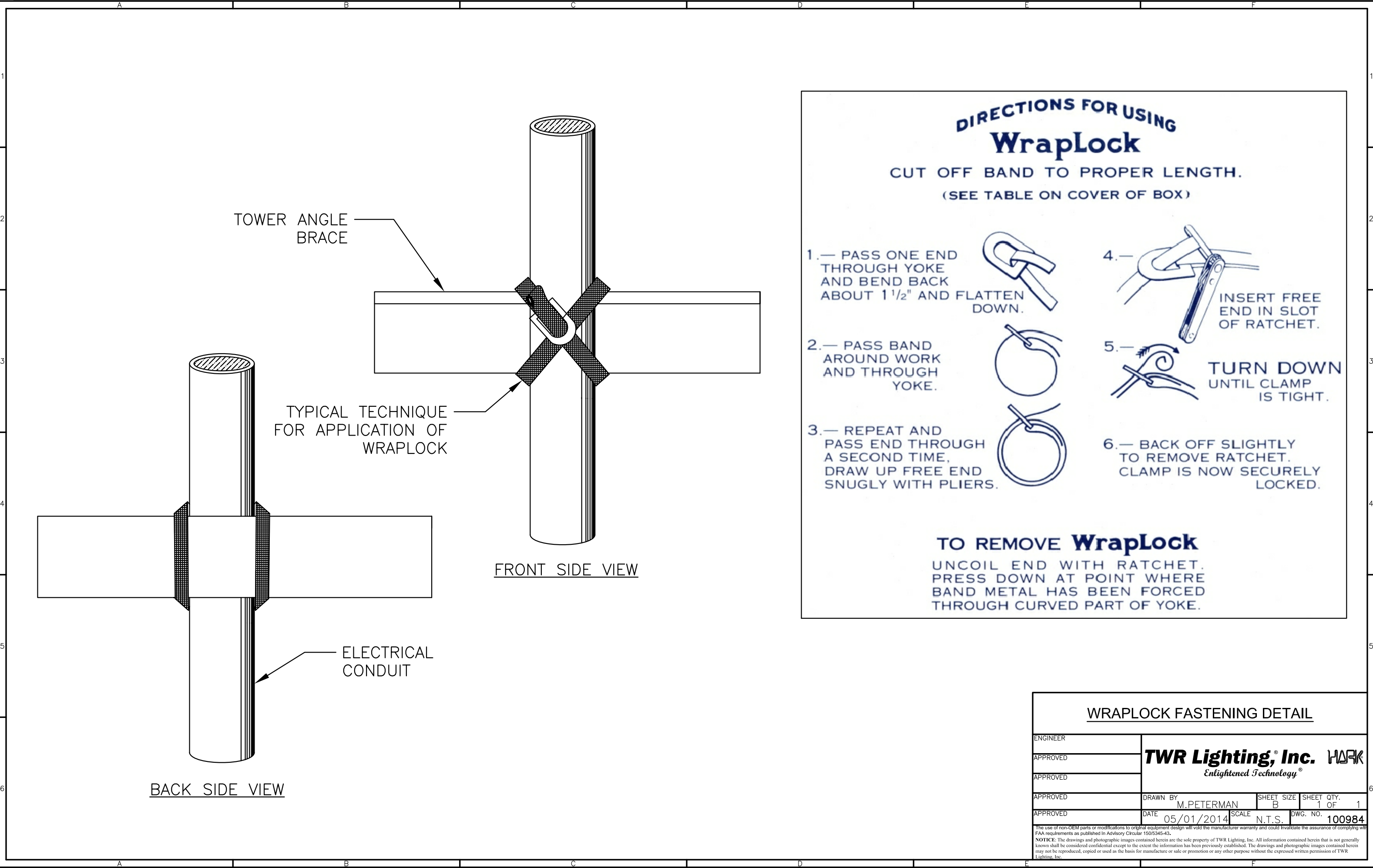
BILL OF MATERIALS			
ITEM NO.	QTY.	TWR PART NO.	DESCRIPTION
1	1	OL2	DOUBLE OBSTRUCTION LIGHT
2	2	116A21TS	116 WATT 120 VOLT LAMP
3	2	CGB295SA	3/4" CORD CONNECTOR .5-.62
4	1	SS5012	WRAPLOCK 50'
5	1	TL27CG	L CONDULET W/COVER & GASKET
6	2	A314	3/4" CONDUIT LOCKNUTS
7	1	OL2PIGTAIL	18" OL2 PIGTAIL
8	1	N34T12	3/4" X 12" NIPPLE
* 9	6	WIRENUTRED	RED WIRE NUT
10	1	AA0	AA0 CONTROLLER
11	2'	12THHNGRN	#12 THHN GREEN WIRE
* 12	1	TAPEL1	BLACK ELECTRICAL TAPE
13	--	STCABLTIE	CABLE TIES (TWR. HT. ÷ 5)
14	--	STCABLEOB	WIRE CABLE (TWR HT. + 30')

\* = NOT SHOWN

- NOTES:
- 1) USE TWR PART #WIRENUTRED AND TAPEL1 TO CONNECT STCABLEOB WIRE TO OL2PIGTAIL IN THE TL27CG.
- 2) PHOTOCELL AND PIGTAIL PROVIDED WITH CONTROLLER. PHOTOCELL IS TO BE MOUNTED OUTDOORS.

AAO LIGHTING KIT W/ CABLE FOR OL2 LIGHT			
PROD DEPT		<b>TWR Lighting, Inc.</b> <i>Enlightened Technology®</i> <b>MARK</b>	
SERV DEPT			
ENGINEER			
DRAWN BY G.D. SEBEK		SHEET SIZE B	SHEET QTY. 1 OF 1
DATE 04/14/98		SCALE N.T.S.	DWG. NO. T1033
<small>The use of non-OEM parts or modifications to original equipment design will void the manufacturer warranty and could invalidate the assurance of complying with FAA requirements as published in Advisory Circular 150/5345-43.</small>			
<small>NOTICE: The drawings and photographic images contained herein are the sole property of TWR Lighting, Inc. All information contained herein that is not generally known shall be considered confidential except to the extent the information has been previously established. The drawings and photographic images contained herein may not be reproduced, copied or used as the basis for manufacture or sale or promotion or any other purpose without the expressed written permission of TWR Lighting, Inc.</small>			

06/18/14		REM. BREATHER
DATE:	LTR.	REVISION



# **TWR Lighting<sup>®</sup>, Inc. HARK<sup>®</sup>**

## ***Enlightened Technology<sup>®</sup>***

### **AA0 CONTROLLER**

---

#### **Warranty & Return Policy**

**TWR Lighting<sup>®</sup>, Inc. (“TWR<sup>®</sup>”) warrants its products (other than “LED Product”)** against defects in design, material (excluding incandescent bulbs) and workmanship for a period ending on the earlier of two (2) years from the date of shipment or one (1) year from the date of installation.

**TWR Lighting<sup>®</sup>, Inc. (“TWR<sup>®</sup>”) warrants its “LED Product”** against defects in design, material and workmanship for a period of five (5) years from the date of shipment. TWR<sup>®</sup>, at its sole option, will, itself, or through others, repair, replace or refund the purchase price paid for “LED Product” that TWR<sup>®</sup> verifies as being inoperable due to original design, material, or workmanship. All warranty replacement “LED Product” is warranted only for the remainder of the original warranty of the “LED Product” replaced. Replacement “LED Product” will be equivalent in function, but not necessarily identical, to the replaced “LED Product.”

**TWR Lighting<sup>®</sup>, Inc. (“TWR<sup>®</sup>”) warrants its “LED Product”** against light degradation for a period of five (5) years from the date of installation. TWR<sup>®</sup>, at its sole option, will, itself, or through others, repair, replace, or refund the purchase price paid for “LED Product” that TWR<sup>®</sup> verifies as failing to meet 75% of the minimum intensity requirements as defined in the FAA Advisory Circular 150/5345-43G dated 09/26/12. All warranty replacement “LED Product” is warranted only for the remainder of the original warranty of the “LED Product” replaced. Replacement “LED Product” will be equivalent in function, but not necessarily identical, to the replaced “LED Product.”

**Replacement parts (other than “LED Product”) are warranted for 90 days from the date of shipment.**

Conditions not covered by this Warranty, or which might **void** this Warranty are as follows:

- x Improper Installation or Operation
- x Misuse
- x Abuse
- x Unauthorized or Improper Repair or Alteration
- x Accident or Negligence in Use, Storage, Transportation, or Handling
- x Any Acts of God or Nature
- x **Non-OEM Parts**

**The use of Non-OEM parts or modifications to original equipment design will void the manufacturer warranty and could invalidate the assurance of complying with FAA requirements as published in Advisory Circular 150/5345-43.**

# **TWR Lighting, Inc.** **MARK**<sup>®</sup>

## *Enlightened Technology*<sup>®</sup>

### **AA0 CONTROLLER**

---

#### **Warranty & Return Policy** (continued)

**Field Service** – Labor, Travel, and Tower Climb are not covered under warranty. Customer shall be obligated to pay for all incurred charges. An extensive network of certified and insured Service Representatives is available if requested.

**Repair, Replacement or Product Return RMA Terms** – You must first contact our Customer Service Department at **713-973-6905** to acquire a Return Merchandise Authorization (RMA) number in order to return the product(s). Please have the following information available when requesting an RMA number:

- x The contact name and phone number of the tower owner or
- x The contact name and phone number of the contractor
- x The site name and number
- x The part number(s)
- x The serial number(s) (if any)
- x A description of the problem
- x The billing information
- x The Ship To address

**This RMA number must be clearly visible on the outside of the box.** If the RMA number is not clearly labeled on the outside of the box, your shipment will be refused. Please ensure the material you are returning is packaged carefully. **The warranty is null and void if the product(s) are damaged in the return shipment.**

**All RMAs must be received by TWR LIGHTING<sup>®</sup>, INC., 10810 W. LITTLE YORK RD. #130, HOUSTON, TX 77041-4051, within 30 days of issuance.**

Upon full compliance with the Return Terms, TWR<sup>®</sup> will replace, repair and return, or credit product(s) returned by the customer. It is TWR<sup>®</sup>'s sole discretion to determine the disposition of the returned item(s).

# **TWR Lighting, Inc.** HARK®

*Enlightened Technology®*

## **AA0 CONTROLLER**

---

### **Warranty & Return Policy** (continued)

**RMA Replacements** – Replacement part(s) will be shipped and billed to the customer for product(s) considered as Warranty, pending return of defective product(s). When available, a certified reconditioned part is shipped as warranty replacement with a Return Merchandise Authorization (RMA) number attached. Upon receipt of returned product(s), inspection, testing, and evaluation will be performed to determine the cause of defect. The customer is then notified of the determination of the testing.

- x Product(s) that is deemed defective and/or unrepairable and covered under warranty - a credit will be issued to the customer's account.
- x Product(s) found to have no defect will be subject to a **\$75.00 per hour testing charge (1 hour minimum), which will be invoiced to the customer.** At this time the customer may decide to have the tested part(s) returned and is responsible for the return charges.
- x Product(s) under warranty, which the customer does not wish returned, the customer will be issued a credit against the replacement invoice.

**RMA Repair & Return** – A Return Merchandise Authorization (RMA) will be issued for all part(s) returned to TWR® for repair. Upon receipt of returned product(s), inspection, testing, and evaluation will be performed to determine the cause of defect. The customer is then notified of the determination of the testing. If the returned part(s) is deemed unrepairable, or the returned part(s) is found to have no defect, the customer will be subject to a **\$75.00 per hour testing charge (1 hour minimum), which will be invoiced to the customer.** Should the returned parts be determined to be repairable, a written estimated cost of repair will be sent to the customer for their written approval prior to any work being performed. In order to have the tested part(s) repaired and/or returned, the customer must issue a purchase order and is responsible for the return shipping charges.

**RMA Return to Stock** – Any product order that is returned to TWR® for part(s) ordered incorrectly or found to be unneeded upon receipt by the customer, the customer may be required to pay a minimum **20% restocking fee.** Product returned for credit must be returned within 60-days of original purchase, be in new and resalable condition, and in original packaging. Once the product is received by TWR it's condition will be evaluated and a credit will be issued only once it is determined that the RMA Return Terms have been met.

**Credits** – Credits are issued once it is determined that all of the Warranty and Return Terms are met. All credits are processed on Fridays. In the event a Friday falls on a Holiday, the credit will be issued on the following Friday.



*Enlightened Technology®*

## AA0 CONTROLLER

---

### Warranty & Return Policy (continued)

**Freight** – All warranty replacement part(s) will be shipped via ground delivery and paid for by TWR®. Delivery other than ground is the responsibility of the customer.

REMEDIES UNDER THIS WARRANTY ARE LIMITED TO PROVISIONS OF REPLACEMENT PARTS AND REPAIRS AS SPECIFICALLY PROVIDED. IN NO EVENT SHALL TWR® BE LIABLE FOR ANY OTHER LOSSES, DAMAGES, COSTS, OR EXPENSES INCURRED BY THE CUSTOMER, INCLUDING, BUT NOT LIMITED TO, LOSS FROM FAILURE OF THE PRODUCT(S) TO OPERATE FOR ANY TIME, AND ALL OTHER DIRECT, INDIRECT, SPECIAL, INCIDENTAL, OR CONSEQUENTIAL DAMAGES, INCLUDING ALL PERSONAL INJURY OR PROPERTY DAMAGE DUE TO ALLEGED NEGLIGENCE, OR ANY OTHER LEGAL THEORY WHATSOEVER. THIS WARRANTY IS MADE BY TWR® EXPRESSLY IN LIEU OF ALL OTHER WARRANTIES, WHETHER EXPRESSED OR IMPLIED. WITHOUT LIMITING THE GENERALITY OF THE FORGOING, TWR® MAKES NO WARRANTY OF MERCHANTABILITY OR FITNESS OF THE PRODUCT(S) FOR ANY PARTICULAR PURPOSE. TWR® EXPRESSLY DISCLAIMS ALL OTHER WARRANTIES.





*Enlightened Technology®*

## AA0 CONTROLLER

---

### RETURN MERCHANDISE AUTHORIZATION (RMA) FORM

RMA#: \_\_\_\_\_ DATE: \_\_\_\_\_

CUSTOMER: \_\_\_\_\_

CONTACT: \_\_\_\_\_ PHONE NO.: \_\_\_\_\_

ITEM DESCRIPTION (PART NO.): \_\_\_\_\_

MODEL NO.: \_\_\_\_\_ SERIAL NO.: \_\_\_\_\_

ORIGINAL TWR INVOICE NO.: \_\_\_\_\_ DATED: \_\_\_\_\_

DESCRIPTION OF PROBLEM: \_\_\_\_\_

SIGNED: \_\_\_\_\_ DATE NEEDED: \_\_\_\_\_

RETURN ADDRESS: \_\_\_\_\_

PLEASE RETURN PRODUCT TO: 10810 W. LITTLE YORK RD., #130 HOUSTON, TX 77041-4051





*Enlightened Technology®*

## AA0 CONTROLLER

---

### RETURN MERCHANDISE AUTHORIZATION (RMA) FORM

RMA#: \_\_\_\_\_ DATE: \_\_\_\_\_

CUSTOMER: \_\_\_\_\_

\_\_\_\_\_

CONTACT: \_\_\_\_\_ PHONE NO.: \_\_\_\_\_

ITEM DESCRIPTION (PART NO.): \_\_\_\_\_

\_\_\_\_\_

MODEL NO.: \_\_\_\_\_ SERIAL NO.: \_\_\_\_\_

ORIGINAL TWR INVOICE NO.: \_\_\_\_\_ DATED: \_\_\_\_\_

DESCRIPTION OF PROBLEM: \_\_\_\_\_

\_\_\_\_\_

\_\_\_\_\_

\_\_\_\_\_

SIGNED: \_\_\_\_\_ DATE NEEDED: \_\_\_\_\_

RETURN ADDRESS: \_\_\_\_\_

PLEASE RETURN PRODUCT TO: 10810 W. LITTLE YORK RD., #130 HOUSTON, TX 77041-4051