



10810 W LITTLE YORK RD. #130 HOUSTON TX 77041-4051
VOICE (713) 973-6905 FAX (713) 973-9352
web: www.twrlighting.com

IMPORTANT !!!

PLEASE TAKE THE TIME TO FILL OUT FORM COMPLETELY. FILE IN A SAFE PLACE. IN THE EVENT YOU EXPERIENCE PROBLEMS WITH OR HAVE QUESTIONS CONCERNING YOUR CONTROLLER, THE FOLLOWING INFORMATION IS NECESSARY TO OBTAIN PROPER SERVICE AND PARTS.

MODEL # AA3/5MLED230V

SERIAL # _____

PURCHASE DATE _____

PURCHASED FROM _____

TWR Lighting, Inc. **MARK**

Enlightened Technology®

AA3/5MLED230V CONTROLLER

TABLE OF CONTENTS

1.0	GENERAL INFORMATION	1
2.0	INSTALLATION INSTRUCTIONS	2
2.1	Power Supply Control Cabinet Mounting.....	2
2.2	External Photocell Wiring.....	3
2.3	Power Wiring	3
2.4	LED Beacon and Sidelight Wiring.....	4
2.5	LED Beacon and Sidelight Alarm Wiring.....	5
2.6	Alarm Testing.....	6
3.0	THEORY OF OPERATION	7
3.1	Power Supply.....	7
3.2	LED Sidelights.....	7
3.3	LED Beacons	7
4.0	MAINTENANCE GUIDE.....	8
4.1	Red Obstruction Lighting	8
4.2	L-864 LED Beacon Replacement.....	8
4.3	L-810 LED Sidelight Replacement	8
4.4	L-864 Controller.....	8
4.5	Photocell.....	8
5.0	MAJOR PARTS LIST.....	9
6.0	SUGGESTED SPARE PARTS LIST.....	10

WARRANTY & RETURN POLICY

RETURN MERCHANDISE AUTHORIZATION (RMA) FORM

TWR Lighting, Inc. **MARK**

Enlightened Technology®

AA3/5MLED230V CONTROLLER

APPENDIX

CHASSIS COMPONENT LAYOUT	1291-R (REV B)
SCHEMATIC LAYOUT.....	1291-S (REV B)
LK2A3/5 LEDRF TOWER LIGHTING KIT CABLE RUN	802-02RF
PHOTOCELL HOUSING DETAIL	100239 (REV H)
LED SIDELIGHT AND LED BEACON CURRENT SENSORS.....	101088 (REV B)
LED BEACON2 ASSEMBLY	100761 (REV C)
OL1VLED2 (L810 SINGLE OBSTRUCTION LIGHT)	100656 (REV E)
OL2VLED2 (L810 DOUBLE OBSTRUCTION LIGHT).....	100658 (REV F)
JUNCTION BOX DETAIL.....	100089 (REV A)

TWR Lighting[®], Inc. HARK[®]

Enlightened Technology[®]

AA3/5MLED230V CONTROLLER

1.0 GENERAL INFORMATION

The TWR Lighting[®], Inc. (TWR[®]) Model AA3/5M-LED Controller is made for A3 lighting of towers 701' to 1,050' above ground level (AGL), in accordance with the FAA A/C 70/7460-1K. One (1) LED Beacon should be placed at the top of the structure, two (2) LED Beacons at the 2/3 interval, and two (2) LED Beacons at the 1/3 interval with respect to overall tower height. Obstruction LED Sidelights should be placed at the 5/6, 1/2, and 1/6 intervals.

The flash rate of the LED Beacons is thirty (30) per minute. The LED Beacons flash synchronized to one another. The LED Sidelights steady burn.

Power supplied to the controller shall be 230V AC single phase.

Controller functions that are monitored by remote alarms in the form of dry contact closures are as follows:

POWER FAILURE	Monitors 230V AC to the controller. Relay K1 alarms in the event of power failure or tripped circuit breaker.
"LIGHTS ON"	K2 relay will give an indication whenever the controller is activated.
LED BEACONS	Will give an alarm in the event one (1) LED BEACON fails on any level.
FLASHER FAILURE	K3 relay will give an alarm in the event of flasher failure.
OBSTRUCTION LIGHTS	Will give an alarm when one (1) of three (3) sidelights fails.

AA3/5MLED230V CONTROLLER

2.0 INSTALLATION INSTRUCTIONS

WARNING DANGER !!!!

THIS SYSTEM OPERATES AT HIGH VOLTAGE LEVELS THAT COULD BE LETHAL TO SERVICE PERSONNEL. ALL INSTALLATION AND MAINTENANCE WORK SHOULD BE DONE BY QUALIFIED SERVICE PERSONNEL ONLY. WHEN PERSONNEL IS INSTALLING SYSTEM OR PERFORMING MAINTENANCE ON THIS SYSTEM, MAKE SURE THE POWER IS TURNED OFF AT THE SERVICE BREAK PANEL!!

READ AND UNDERSTAND THE THEORY OF OPERATION AND ITS SAFETY MESSAGES BEFORE ATTEMPTING INSTALLATION/MAINTENANCE OF THIS SYSTEM.

2.1 POWER SUPPLY CONTROL CABINET MOUNTING

(Refer to Drawing 1291-R)

2.1.1 The power supply control cabinet can be located at the base of the structure or in an equipment building. Mounting footprints are shown on drawing 1291-R. Power wiring to the control cabinet should be in accordance with local methods and National Electrical Codes (NEC).

2.1.2 If the control cabinet is mounted inside an equipment building, the photocell should be mounted vertically on ½" conduit outside the building above the eaves facing north. Wiring from the photocell socket to the control cabinet should consist of one (1) each, red, black and white wires. The white wire is connected to the socket terminal marked "N," the black wire is connected to the socket terminal marked "Li," and the red wire is connected to the socket terminal marked "LO." As above, the photocell should be positioned so that it does not "see" ambient light, which would prevent it from switching to the nightmode.

AA3/5MLED230V CONTROLLER

2.1.3 If the control cabinet is mounted outside an equipment building, the photocell should be mounted vertically on 1/2" conduit so the photocell is above the control cabinet. Care must be taken to assure that the photocell does not "see" any ambient light that would prevent it from switching into the nightmode. The photocell wiring is the same as in 2.1.1.

2.1.4 The wiring from the photocell, the service breaker, the LED beacon, and the LED sidelights should enter the control cabinet through the watertight connectors in the bottom of the cabinet. Inside the cabinet, the connections will be made on the terminal strips and circuit breakers located at the bottom of the chassis. These connections are made as follows:

2.2 PHOTOCELL WIRING (Refer to Drawing 1291-R)

2.2.1 Connect the **BLACK** wire from the photocell to terminal block TB2 marked "L."

2.2.2 Connect the **RED** wire from the photocell to terminal block TB2 marked "SSR."

2.2.3 Connect the **WHITE** wire from the photocell to terminal block TB2 marked "N."

2.3 POWER WIRING (Refer to Drawing 1291-R)

2.3.1 Power wiring to the control cabinet should be in accordance with local methods and NEC.

2.3.2 Circuit breaker needs to be a one (1) pole rated at 15 amps.

2.3.3 Connect incoming 230V AC "Hot" to terminal block TB1 marked "L."

2.3.4 Connect neutral to one (1) of the terminal blocks TB1 marked "N."

2.3.5 Connect the AC ground to the aluminum mounting lug bolts on the panel.

AA3/5MLED230V CONTROLLER

2.4 LED BEACON AND SIDELIGHT WIRING

(Refer to Drawings 1291-R and 802-02RF)

Install wiring between the controller and the LED Beacons utilizing either strobe cable or conduit method. Refer to drawings 1291-R and 802-02RF for installation of light kits. Following these requirements, installing light kits will require lifting of the cable by the supplied cable grip or conduit to affix to the tower. Always work safely and adhere to all OSHA Safety Guidelines when lifting wiring or working on the structure or tower itself. It is the installer's responsibility to install the lighting kit in a safe manner. Installers can request from OSHA their requirements 29CFT 1926.21, and 20CFR 1926.105, to ensure compliance to regulations.

NOTE: On occasion, a set of custom lighting kit drawings may be specifically requested by a customer and installed in this manual. In cases such as these, the drawings will precede the manual if a conflict occurs.

- 2.4.1** Connect the **BLACK** wire from LED Beacon #1 to circuit breaker marked "BL1."
- 2.4.2** Connect the **BLUE** wire from LED Beacon #2 and LED Beacon #3 to circuit breaker marked "BL2."
- 2.4.3** Connect the **BROWN** wire from LED Beacon #4 and LED Beacon #5 to circuit breaker marked "BL3."
- 2.4.4** Connect the **RED** wire from LED Sidelight group #1 to circuit breaker marked "SL1."
- 2.4.5** Connect the **YELLOW** wire from LED Sidelight group #2 to circuit breaker marked "SL2."
- 2.4.6** Connect the **PURPLE** wire from LED Sidelight group #3 to circuit breaker marked "SL3."
- 2.4.7** Connect the **WHITE** neutral wire(s) to one (1) or more of the terminal blocks on TB1 marked "N."

AA3/5MLED230V CONTROLLER

2.5 LED BEACON AND LED SIDELIGHT ALARM WIRING

(Refer to Drawings 1291-R and 1291-S)

- 2.5.1** Alarm relays K1 – K3, and alarm modules M2 – M7 are provided for independent contact closures for: Power Failure, Lights “ON,” Flasher Failure, LED Beacon Burnout, and LED Sidelight Burnout.
- 2.5.2** Alarm Wiring – To utilize all of the red light alarms, the customer will need nine (9) pairs of wires to interface with the alarm device. One (1) wire from each of the nine (9) pairs will terminate at the points marked common. The remaining wire from each pair will terminate as follows.
- 2.5.3** Power Failure Alarm – Connect to Relay K1, terminal #3, for normally open, or terminal #6, for normally closed monitoring.
- 2.5.4** Tower Lights "ON" – Connect to Relay K2, terminal #3, for normally open, or terminal #6, for normally closed monitoring.
- 2.5.5** Flasher Failure – Connect to Relay K3, terminal #6, for normally open, or terminal #3, for normally closed monitoring.
- 2.5.6** SL1 level Burnout – Connect to Module M5, terminal #24, for normally open, or terminal #22, for normally closed monitoring.
- 2.5.7** SL2 level Burnout – Connect to Module M6, terminal #24, for normally open, or terminal #22, for normally closed monitoring.
- 2.5.8** SL3 level Burnout – Connect to Module M7, terminal #24, for normally open, or terminal #22, for normally closed monitoring.
- 2.5.9** BL1 level Burnout – Connect to Module M2, terminal #24, for normally open, or terminal #22, for normally closed monitoring.
- 2.5.10** BL2 level Burnout – Connect to Module M3, terminal #24, for normally open, or terminal #22, for normally closed monitoring.
- 2.5.11** BL3 level Burnout – Connect to Module M4, terminal #24, for normally open, or terminal #22, for normally closed monitoring.

AA3/5MLED230V CONTROLLER

2.6 ALARM TESTING

To test alarms, follow the procedures using an “ohm” meter between alarm common and alarm points.

POWER FAILURE Pull circuit breaker at electrical panel.

TOWER LIGHTS “ON” Operate photocell by-pass switch (SW1) or cover the photocell.

LED BEACONS and LED SIDELIGHTS
Pull circuit breakers on controller panel.

AA3/5MLED230V CONTROLLER

3.0 THEORY OF OPERATION

3.1 POWER SUPPLY

230V AC enters the controller from the circuit breaker panel. Line (L) sits at the PRD waiting to be switched and also keeps the power failure Relay K1 energized. When the 6390-FAA photocell is activated, line (L) energizes the coil of the PRD and K2 "Lights On" Relay. This also can be accomplished by using the photocell by-pass switch (SW1).

3.2 LED SIDELIGHTS

Line LDS is sent to Modules M5, M6, and M7, which are current sensing modules for the LED Sidelights. Each RM22JA31MRSP01 monitors one (1) level of LED Sidelights, and will provide a contact closure along a visual indication if one (1) or more fails.

3.3 LED BEACONS

Line LDB is sent to Modules M1, M2, M3, and M4. Module M1 is the primary flasher for the LED beacons. The output of Module M1 is sent through the current sensing Modules M2, M3, and M4, then to the circuit breaker outputs BL1, BL2, and BL3. If Modules M2, M3, or M4 detect a lamp burnout, then the module would provide a contact closure along with a visual indication for that lamp circuit.

Relay K3 is a Flasher Failure Relay for the LED Beacons. If Relay K3 detects a Flasher Failure, it would then provide a contact closure for the flasher circuit.

Module M8 is a 10 second time delay for the flasher fail circuit.

AA3/5MLED230V CONTROLLER

4.0 MAINTENANCE GUIDE

4.1 RED OBSTRUCTION LIGHTING

No scheduled maintenance is required. Perform on an as needed basis only.

TOOLS REQUIRED: NONE

4.2 L-864 LED BEACON REPLACEMENT

No scheduled maintenance is required. Perform on an as needed basis only.

4.3 L-810 LED SIDELIGHT REPLACEMENT

No scheduled maintenance is required. Perform on an as needed basis only.

4.4 L-864 CONTROLLER

No scheduled maintenance is required. Perform on an as needed basis only.

4.5 PHOTOCELL

The photocell is a sealed unit. No maintenance is needed nor required other than replacement as necessary.

TWR Lighting, Inc.

Enlightened Technology®

AA3/5MLED230V CONTROLLER

5.0 MAJOR COMPONENTS PARTS LIST

QTY	PART NUMBER	DESCRIPTION
1	6390-FAA	120 – 240V Photocell
1	PF-250	Solid State Flasher (M1)
1	STA08015	35,000 ohm 20 watt Resistor (R1)
1	PRD7AG0-240V	Mechanical Load Contactor (PRD)
3	PB27E122	Octal Sockets
3	9KE-240V	SPDT Relay (K1-K3)
1	STJ01002	Switch (SW1)
1	VJ1412HWPL2	Enclosure
8	8WA1204	Terminal Block (TB1 & TB2)
3	8WA1802	Rail Link
2	8WA1808	Terminal Block End Stop
6	S261D1	1 amp Circuit Breakers (BL1-BL3, SL1-SL3)
6	RM22JA31MRSP01	LED Sidelight (M2-M7), and LED Beacon Current Sensors
1	TS16110	230V, 10 second time delay module (M6)

AA3/5MLED230V CONTROLLER

6.0 SUGGESTED SPARE PARTS LIST

QTY	PART NUMBER	DESCRIPTION
1	6390-FAA	120 – 240V Photocell
1	PF-250	Solid State Flasher (M1)
1	9KE-240V	SPDT Relay (K1-K3)
2	RM22JA31MRSP01	LED Sidelight (M2-M7), and LED Beacon Current Sensors

TWR Lighting, Inc. MARK

Enlightened Technology®

AA3/5MLED230V CONTROLLER

Warranty & Return Policy

TWR Lighting®, Inc. (“TWR®”) warrants its products (other than “LED Product”) against defects in design, material (excluding incandescent bulbs) and workmanship for a period ending on the earlier of two (2) years from the date of shipment or one (1) year from the date of installation.

TWR Lighting®, Inc. (“TWR®”) warrants its “LED Product” against defects in design, material and workmanship for a period of five (5) years from the date of shipment. TWR®, at its sole option, will, itself, or through others, repair, replace or refund the purchase price paid for “LED Product” that TWR® verifies as being inoperable due to original design, material, or workmanship. All warranty replacement “LED Product” is warranted only for the remainder of the original warranty of the “LED Product” replaced. Replacement “LED Product” will be equivalent in function, but not necessarily identical, to the replaced “LED Product.”

TWR Lighting®, Inc. (“TWR®”) warrants its “LED Product” against light degradation for a period of five (5) years from the date of installation. TWR®, at its sole option, will, itself, or through others, repair, replace, or refund the purchase price paid for “LED Product” that TWR® verifies as failing to meet 75% of the minimum intensity requirements as defined in the FAA Advisory Circular 150/5345-43G dated 09/26/12. All warranty replacement “LED Product” is warranted only for the remainder of the original warranty of the “LED Product” replaced. Replacement “LED Product” will be equivalent in function, but not necessarily identical, to the replaced “LED Product.”

Replacement parts (other than “LED Product”) are warranted for 90 days from the date of shipment.

Conditions not covered by this Warranty, or which might void this Warranty are as follows:

- x Improper Installation or Operation
- x Misuse
- x Abuse
- x Unauthorized or Improper Repair or Alteration
- x Accident or Negligence in Use, Storage, Transportation, or Handling
- x Any Acts of God or Nature
- x **Non-OEM Parts**

The use of Non-OEM parts or modifications to original equipment design will void the manufacturer warranty and could invalidate the assurance of complying with FAA requirements as published in Advisory Circular 150/5345-43.



AA3/5MLED230V CONTROLLER

Warranty & Return Policy (continued)

Field Service – Labor, Travel, and Tower Climb are not covered under warranty. Customer shall be obligated to pay for all incurred charges. An extensive network of certified and insured Service Representatives is available if requested.

Repair, Replacement or Product Return RMA Terms – You must first contact our Customer Service Department at **713-973-6905** to acquire a Return Merchandise Authorization (RMA) number in order to return the product(s). Please have the following information available when requesting an RMA number:

- x The contact name and phone number of the tower owner or
- x The contact name and phone number of the contractor
- x The site name and number
- x The part number(s)
- x The serial number(s) (if any)
- x A description of the problem
- x The billing information
- x The Ship To address

This RMA number must be clearly visible on the outside of the box. If the RMA number is not clearly labeled on the outside of the box, your shipment will be refused. Please ensure the material you are returning is packaged carefully. **The warranty is null and void if the product(s) are damaged in the return shipment.**

All RMAs must be received by TWR LIGHTING®, INC., 10810 W. LITTLE YORK RD., #130, HOUSTON, TX 77041-4051, within 30 days of issuance.

Upon full compliance with the Return Terms, TWR® will replace, repair and return, or credit product(s) returned by the customer. It is TWR®'s sole discretion to determine the disposition of the returned item(s).

TWR Lighting, Inc. **MARK**

Enlightened Technology®

AA3/5MLED230V CONTROLLER

Warranty & Return Policy (continued)

RMA Replacements – Replacement part(s) will be shipped and billed to the customer for product(s) considered as Warranty, pending return of defective product(s). When available, a certified reconditioned part is shipped as warranty replacement with a Return Merchandise Authorization (RMA) number attached. Upon receipt of returned product(s), inspection, testing, and evaluation will be performed to determine the cause of defect. The customer is then notified of the determination of the testing.

- x Product(s) that is deemed defective and/or unrepairable and covered under warranty - a credit will be issued to the customer's account.
- x Product(s) found to have no defect will be subject to a **\$75.00 per hour testing charge (1 hour minimum), which will be invoiced to the customer.** At this time the customer may decide to have the tested part(s) returned and is responsible for the return charges.
- x Product(s) under warranty, which the customer does not wish returned, the customer will be issued a credit against the replacement invoice.

RMA Repair & Return – A Return Merchandise Authorization (RMA) will be issued for all part(s) returned to TWR® for repair. Upon receipt of returned product(s), inspection, testing, and evaluation will be performed to determine the cause of defect. The customer is then notified of the determination of the testing. If the returned part(s) is deemed unrepairable, or the returned part(s) is found to have no defect, the customer will be subject to a **\$75.00 per hour testing charge (1 hour minimum), which will be invoiced to the customer.** Should the returned parts be determined to be repairable, a written estimated cost of repair will be sent to the customer for their written approval prior to any work being performed. In order to have the tested part(s) repaired and/or returned, the customer must issue a purchase order and is responsible for the return shipping charges.

RMA Return to Stock – Any product order that is returned to TWR® for part(s) ordered incorrectly or found to be unneeded upon receipt by the customer, the customer may be required to pay a minimum **20% restocking fee.** Product returned for credit must be returned within 60-days of original purchase, be in new and resalable condition, and in original packaging. Once the product is received by TWR it's condition will be evaluated and a credit will be issued only once it is determined that the RMA Return Terms have been met.

Credits – Credits are issued once it is determined that all of the Warranty and Return Terms are met. All credits are processed on Fridays. In the event a Friday falls on a Holiday, the credit will be issued on the following Friday.



AA3/5MLED230V CONTROLLER

Warranty & Return Policy (continued)

Freight – All warranty replacement part(s) will be shipped via ground delivery and paid for by TWR®. Delivery other than ground is the responsibility of the customer.

REMEDIES UNDER THIS WARRANTY ARE LIMITED TO PROVISIONS OF REPLACEMENT PARTS AND REPAIRS AS SPECIFICALLY PROVIDED. IN NO EVENT SHALL TWR® BE LIABLE FOR ANY OTHER LOSSES, DAMAGES, COSTS, OR EXPENSES INCURRED BY THE CUSTOMER, INCLUDING, BUT NOT LIMITED TO, LOSS FROM FAILURE OF THE PRODUCT(S) TO OPERATE FOR ANY TIME, AND ALL OTHER DIRECT, INDIRECT, SPECIAL, INCIDENTAL, OR CONSEQUENTIAL DAMAGES, INCLUDING ALL PERSONAL INJURY OR PROPERTY DAMAGE DUE TO ALLEGED NEGLIGENCE, OR ANY OTHER LEGAL THEORY WHATSOEVER. THIS WARRANTY IS MADE BY TWR® EXPRESSLY IN LIEU OF ALL OTHER WARRANTIES, WHETHER EXPRESSED OR IMPLIED. WITHOUT LIMITING THE GENERALITY OF THE FORGOING, TWR® MAKES NO WARRANTY OF MERCHANTABILITY OR FITNESS OF THE PRODUCT(S) FOR ANY PARTICULAR PURPOSE. TWR® EXPRESSLY DISCLAIMS ALL OTHER WARRANTIES.



AA3/5MLED230V CONTROLLER

RETURN MERCHANDISE AUTHORIZATION (RMA) FORM

RMA#: _____ DATE: _____

CUSTOMER: _____

CONTACT: _____ PHONE NO.: _____

ITEM DESCRIPTION (PART NO.): _____

MODEL NO.: _____ SERIAL NO.: _____

ORIGINAL TWR INVOICE NO.: _____ DATED: _____

DESCRIPTION OF PROBLEM: _____

SIGNED: _____ DATE NEEDED: _____

RETURN ADDRESS: _____

PLEASE RETURN PRODUCT TO: 10810 W LITTLE YORK RD #130 HOUSTON TX 77041-4051



AA3/5MLED230V CONTROLLER

RETURN MERCHANDISE AUTHORIZATION (RMA) FORM

RMA#: _____ DATE: _____

CUSTOMER: _____

CONTACT: _____ PHONE NO.: _____

ITEM DESCRIPTION (PART NO.): _____

MODEL NO.: _____ SERIAL NO.: _____

ORIGINAL TWR INVOICE NO.: _____ DATED: _____

DESCRIPTION OF PROBLEM: _____

SIGNED: _____ DATE NEEDED: _____

RETURN ADDRESS: _____

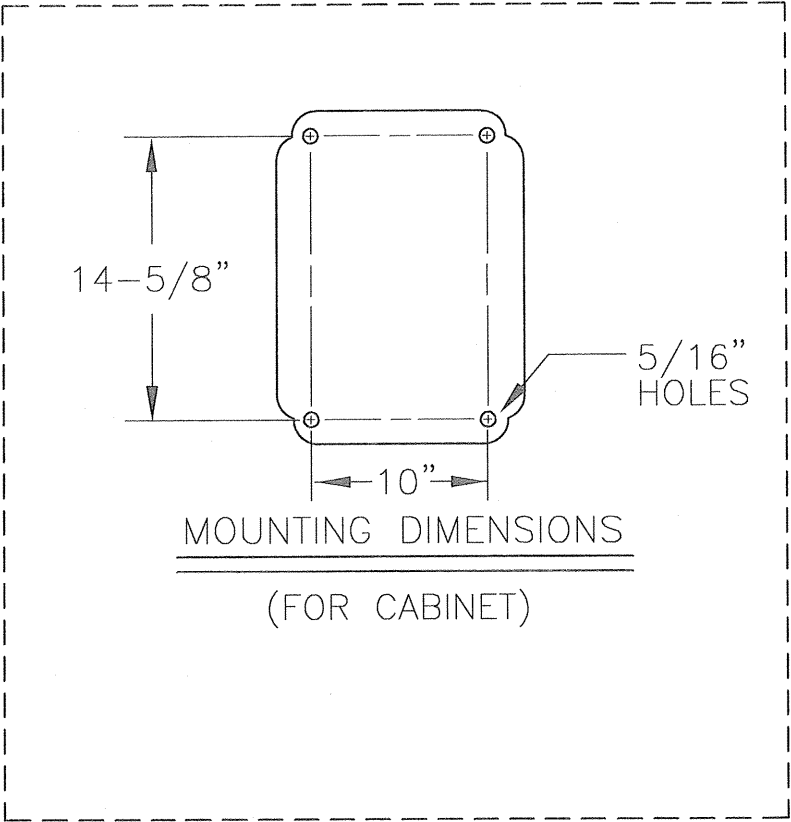
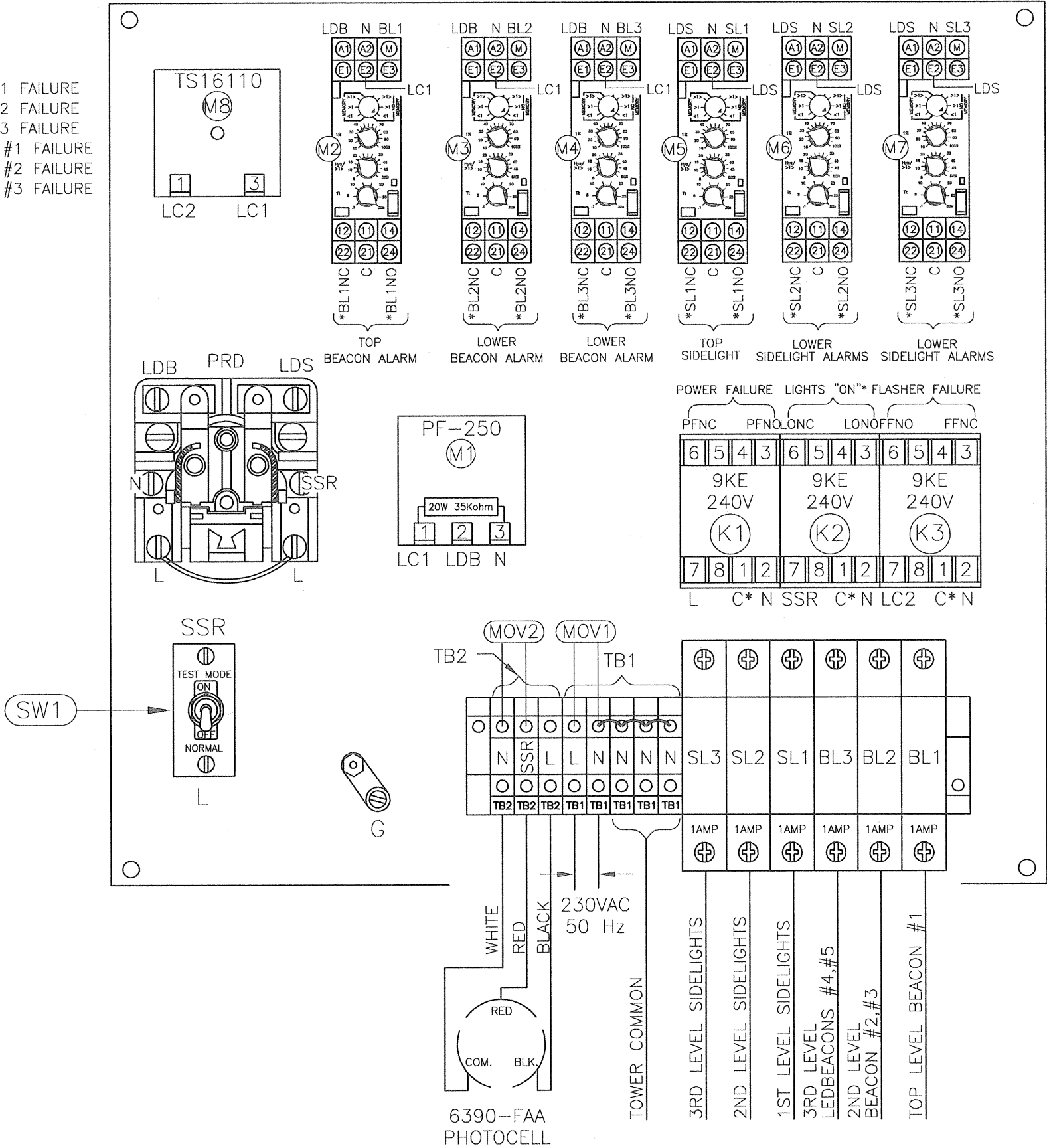
PLEASE RETURN PRODUCT TO: 10810 W LITTLE YORK RD #130 HOUSTON TX 77041-4051

*CUSTOMER ALARM POINTS

C = ALARM COMMON
NC = NORMALLY CLOSE
NO = NORMALLY OPEN
PFNO/PFNC = POWER FAILURE
LONO/LONC = LIGHTS "ON"
BL1NO/BL1NC = LED BEACON LEVEL #1 FAILURE
BL2NO/BL2NC = LED BEACON LEVEL #2 FAILURE
BL3NO/BL3NC = LED BEACON LEVEL #3 FAILURE
SL1NO/SL1NC = LED SIDELIGHT LEVEL #1 FAILURE
SL2NO/SL2NC = LED SIDELIGHT LEVEL #2 FAILURE
SL3NO/SL3NC = LED SIDELIGHT LEVEL #3 FAILURE

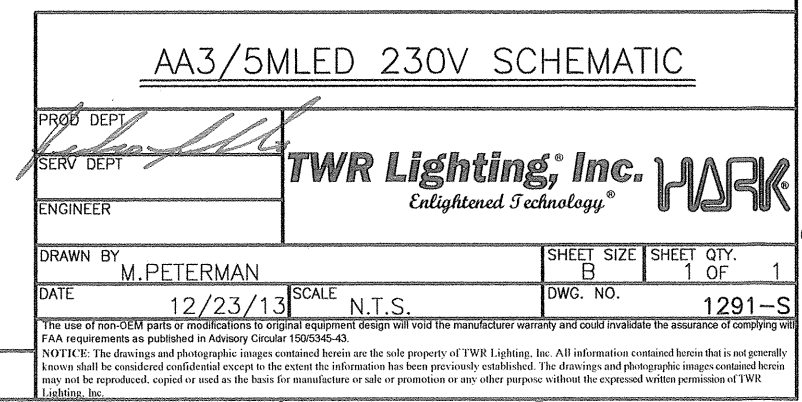
* ALARM OUTPUTS ARE FORM C.

PANEL SIZE - 10-7/8" X 12-7/8" x 1/8"



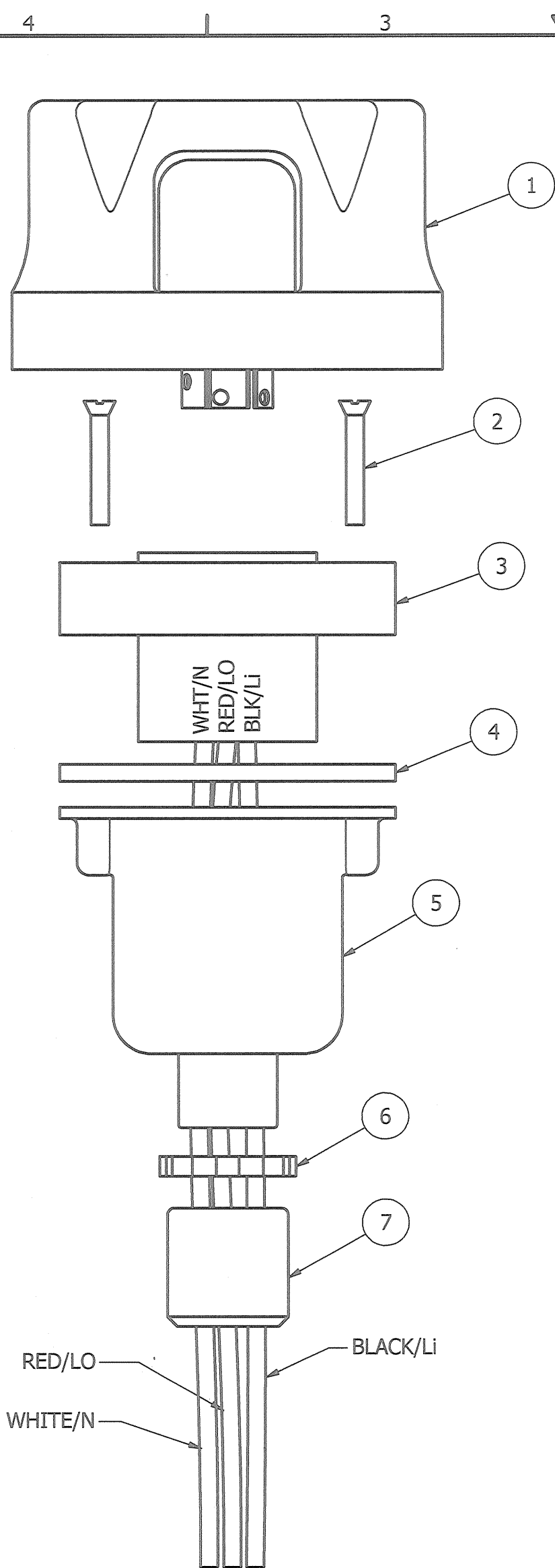
- NOTES:
1. WHEN REPLACING METAL BASE MODULES USE HEAT SINK COMPOUND BETWEEN MODULE AND ALUMINUM PLATE.
 2. WIRES ARE CONNECTED LETTER TO LETTER. (EXAMPLE) LDB TO LDB TO LDB.

AA3/5MLED 230V CONTROLLER			
CHASSIS LAYOUT			
PROD. DEPT.	TWR Lighting, Inc. <i>Enlightened Technology</i>		
SERV. DEPT.	HARK		
ENGINEER			
DRAWN BY	M. PETERMAN	SHEET SIZE	B
DATE	12/23/2013	SCALE	N.T.S.
DWG. NO.	1291-R	SHEET QTY.	1 OF 1
The use of non-OEM parts or modifications to original equipment design will void the manufacturer warranty and could invalidate the assurance of complying with FAA requirements as published in Advisory Circular 150/5345-43.			
NOTICE: The drawings and photographic images contained herein are the sole property of TWR Lighting, Inc. All information contained herein that is not generally known shall be considered confidential except to the extent the information has been previously established. The drawings and photographic images contained herein may not be reproduced, copied or used as the basis for manufacture or sale or promotion or any other purpose without the expressed written permission of TWR Lighting, Inc.			

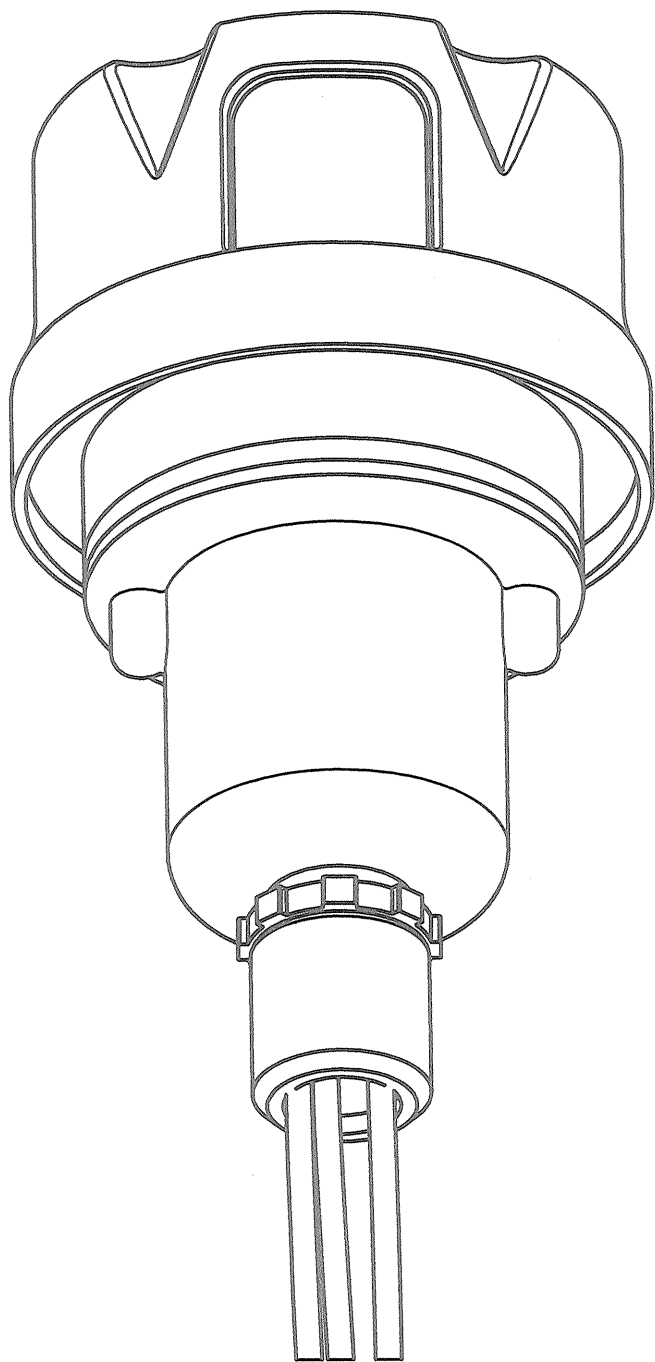


The use of non-OEM parts or modifications to original equipment design will void the manufacturer warranty and could invalidate the assurance of complying with FRA requirements as published in Advisory Circular 150-543-4.

NOTICE: The drawings and photographic images contained herein are the sole property of TWR Lighting, Inc. All information contained herein that is not generally known shall be considered confidential except to the extent the information has been previously established. The drawings and photographic images contained herein may not be reproduced, copied or used as the basis for manufacture or sale or promotion or any other purpose without the expressed written permission of TWR Lighting, Inc.



EXPLODED VIEW



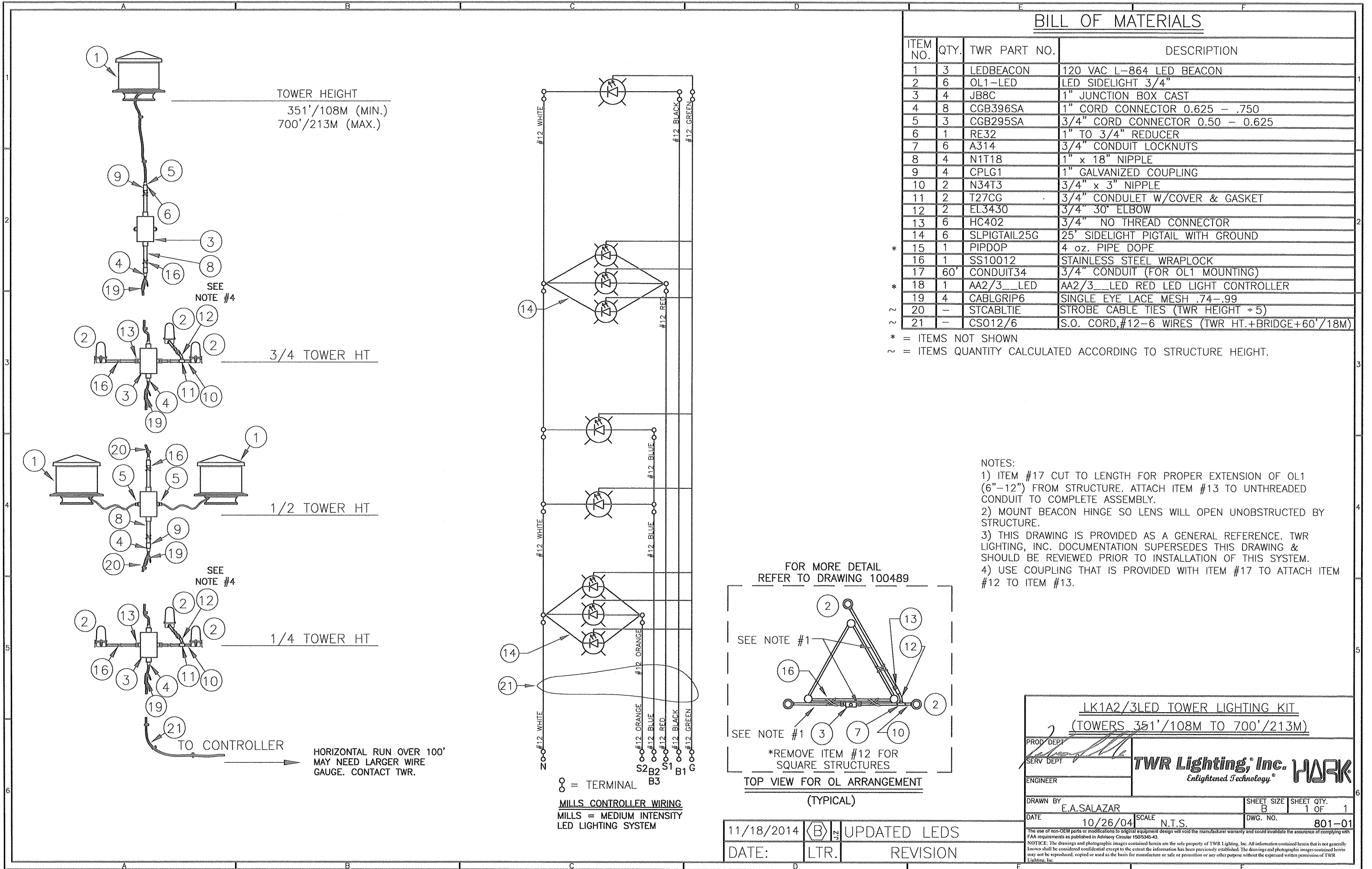
ASSEMBLY

- NOTES:
- ITEM #7 CAN BE USED TO REDUCE 3/4" CONDUIT TO 1/2" CONDUIT AT THE HOUSING OR AT THE CONTROLLER ITSELF.
 - IF ADDITIONAL WIRE IS REQUIRED OVER THE FACTORY 20', USE THE FOLLOWING CHART.
21' TO 300' - 16 AWG TFFN
301' TO 500' - 14 AWG TFFN

PHOTOCELL HOUSING DETAIL

PROD. DEPT.	TWR Lighting, Inc. HARK		
SERV. DEPT.	Enlightened Technology®		
ENGINEER			
DRAWN BY	vhernandez		SHEET SIZE B
DATE	10/18/1995	SCALE	1/1
		DWG. NO.	100239i
The use of non-OEM parts or modifications to original equipment design will void the manufacturer warranty and could invalidate the assurance of complying with FAA requirements as published in Advisory Circular 150/5345-43.			
NOTICE: The drawings and photographic images contained herein are the sole property of TWR Lighting, Inc. All information contained herein that is not generally known shall be considered confidential except to the extent the information has been previously established. The drawings and photographic images contained herein may not be reproduced, copied or used as the basis for manufacture or sale or promotion or any other purpose without the expressed written permission of TWR Lighting, Inc.			

DATE	REV	AUTHOR	DESCRIPTION
02/03/2015	H	JZAMORANO	UPDATED NOTES

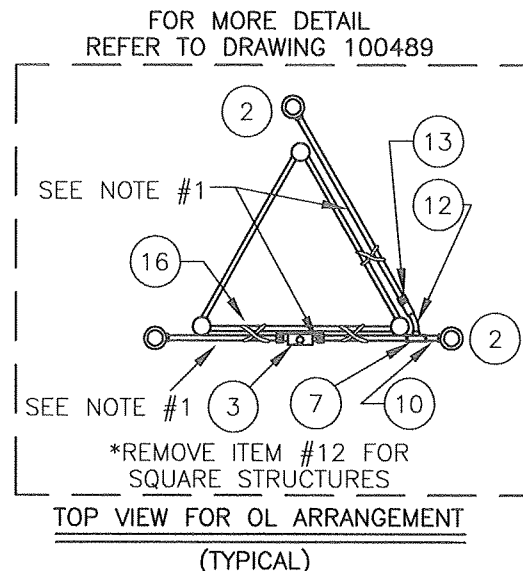


BILL OF MATERIALS

ITEM NO.	QTY.	TWR PART NO.	DESCRIPTION
1	3	LED BEACON	120 VAC L-864 LED BEACON
2	6	OL1-LED	LED SIDELIGHT 3/4"
3	4	JB8C	1" JUNCTION BOX CAST
4	8	CGB396SA	1" CORD CONNECTOR 0.625 - .750
5	3	CGB295SA	3/4" CORD CONNECTOR 0.50 - 0.625
6	1	RE32	1" TO 3/4" REDUCER
7	6	A314	3/4" CONDUIT LOCKNUTS
8	4	N1T18	1" x 18" NIPPLE
9	4	CPLG1	1" GALVANIZED COUPLING
10	2	N34T3	3/4" x 3" NIPPLE
11	2	T27CG	3/4" CONDULET W/COVER & GASKET
12	2	EL3430	3/4" 30° ELBOW
13	6	HC402	3/4" NO THREAD CONNECTOR
14	6	SLPIGTAIL25G	25' SIDELIGHT PIGTAIL WITH GROUND
* 15	1	PIPDOP	4 oz. PIPE DOPE
16	1	SS10012	STAINLESS STEEL WRAPLOCK
17	60'	CONDUIT34	3/4" CONDUIT (FOR OL1 MOUNTING)
* 18	1	AA2/3_LED	AA2/3_LED RED LED LIGHT CONTROLLER
19	4	CABLGRIP6	SINGLE EYE LACE MESH .74-.99
20	-	STCABLTI	STROBE CABLE TIES (TWR HEIGHT + 5)
21	-	CS012/6	S.O. CORD, #12-6 WIRES (TWR HT.+BRIDGE+60'/18M)

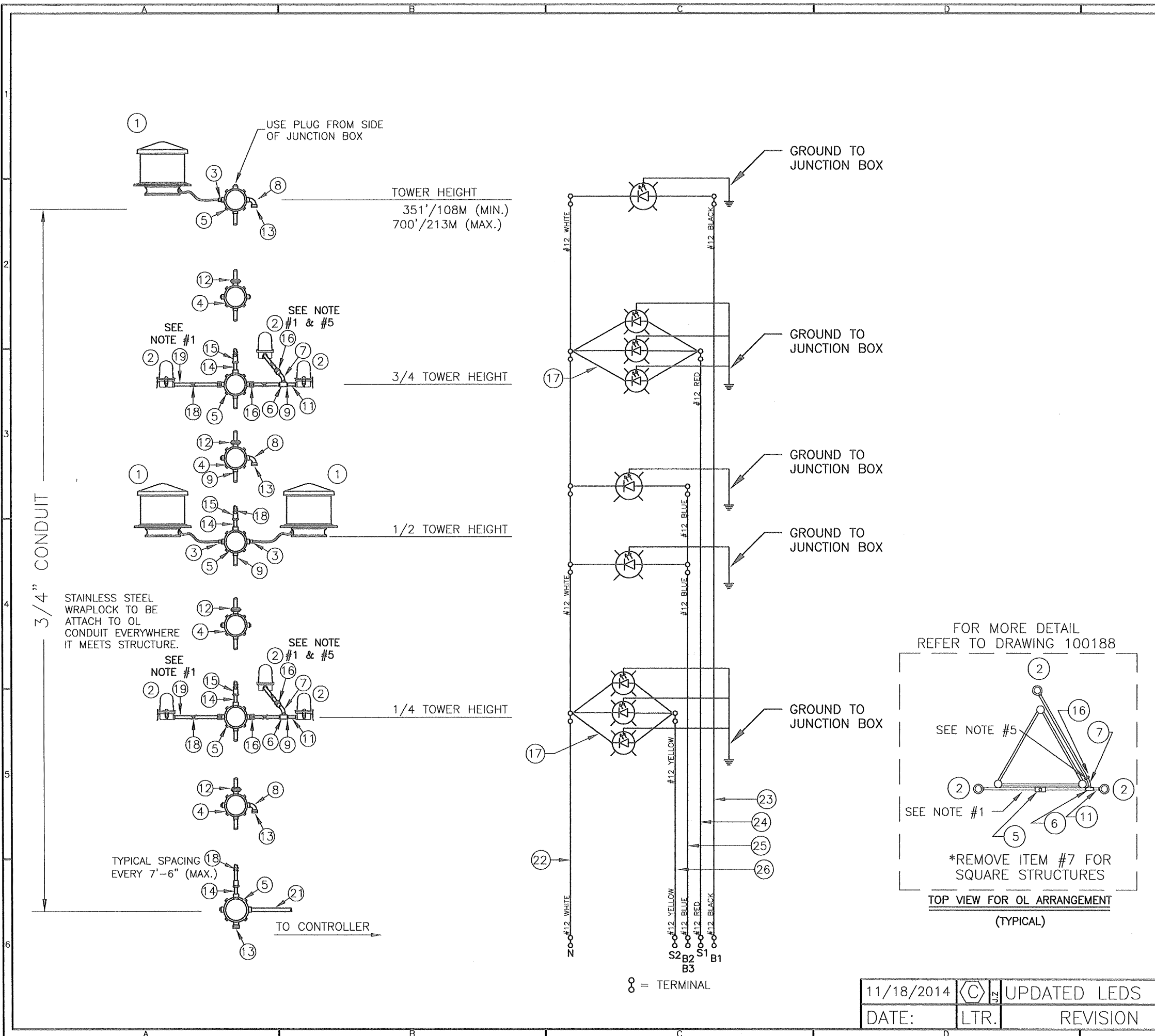
* = ITEMS NOT SHOWN
~ = ITEMS QUANTITY CALCULATED ACCORDING TO STRUCTURE HEIGHT.

NOTES:
1) ITEM #17 CUT TO LENGTH FOR PROPER EXTENSION OF OL1 (6"-12") FROM STRUCTURE. ATTACH ITEM #13 TO UNTHREADED CONDUIT TO COMPLETE ASSEMBLY.
2) MOUNT BEACON HINGE SO LENS WILL OPEN UNOBSTRUCTED BY STRUCTURE.
3) THIS DRAWING IS PROVIDED AS A GENERAL REFERENCE. TWR LIGHTING, INC. DOCUMENTATION SUPERSEDES THIS DRAWING & SHOULD BE REVIEWED PRIOR TO INSTALLATION OF THIS SYSTEM.
4) USE COUPLING THAT IS PROVIDED WITH ITEM #17 TO ATTACH ITEM #12 TO ITEM #13.



LK1A2/3LED TOWER LIGHTING KIT (TOWERS 351'/108M TO 700'/213M)			
PROD DEPT	SERV DEPT		
ENGINEER		TWR Lighting, Inc. WARK Enlightened Technology	
DRAWN BY E.A.SALAZAR	SHEET SIZE B	SHEET QTY. 1 OF 1	DWG. NO. 801-01
DATE 11/18/2014	SCALE N.T.S.	REVISION UPDATED LEDS	
The use of non-OEM parts or modifications to original equipment design will void the manufacturer warranty and could invalidate the assurance of complying with FAA requirements as published in Advisory Circular 150/5345-43.			
NOTICE: The drawings and photographic images contained herein are the sole property of TWR Lighting, Inc. All information contained herein that is not generally known shall be considered confidential except to the extent the information has been previously established. The drawings and photographic images contained herein may not be reproduced, copied or used as the basis for manufacture or sale or promotion or any other purpose without the expressed written permission of TWR Lighting, Inc.			

11/18/2014 (B) 23
DATE: LTR. REVISION



BILL OF MATERIALS

ITEM NO.	QTY.	TWR PART NO.	DESCRIPTION
1	3	LEDBEACON	LED BEACON
2	6	OL1LED	LED SIDELIGHT 3/4"
3	3	CGB295SA	3/4" CORD CONNECTOR 0.50 - 0.625
4	4	JB0	3/4" STRAIN RELIEF
5	5	JB5/7	3/4" JUNCTION BOX
6	3	T27CG	3/4" CONDULET W/COVER AND GASKET
7	2	EL3430	3/4" 30° ELBOW
8	2	EL3490	3/4" 90° ELBOW
9	24	A314	3/4" CONDUIT LOCKNUTS
* 10	2	PIPDOP	4 oz. PIPE DOPE
11	2	N34T3	3/4" x 3" NIPPLE
12	4	UNY205	3/4" UNION
13	4	5012902	3/4" BREATHER
14	4	N34T18	3/4" x 18" NIPPLE
15	4	EXPJNT34	3/4" EXPANSION JOINT
16	6	HC402	3/4" NO THREAD CONNECTOR
17	6	SLPIGTAIL25G	25' SIDELIGHT PIGTAIL WITH GROUND
18	2	SS10012	STAINLESS STEEL WRAPLOCK 100'
19	60'	CONDUIT34	3/4" CONDUIT
* 20	1	AA2/3	AA2/3 LED CONTROLLER

ITEM NUMBERS #21-#26 ARE NOT INCLUDED IN THE KIT BUT ARE AVAILABLE UPON REQUEST, AND REQUIRED FOR INSTALLATION.

21	-	CONDUIT34	3/4" CONDUIT (TOWER HT. + 40'/12M)
22	-	12THHNWHT	#12 THHN WHT. WIRE (TOWER HT.+60'/19M)
23	-	12THHNBK	#12 THHN BLK. WIRE (TOWER HT.+60'/19M)
24	-	12THHNRED	#12 THHN RED WIRE (3/4 TWR HT.+60'/19M)
25	-	12THHNBLUE	#12 THHN BLUE WIRE (1/2 TOWER HT.+60'/19M)
26	-	12THHNYLW	#12 THHN YLW. WIRE (1/4 TWR HT.+60'/19M)

* = ITEMS NOT SHOWN

NOTES:

- ITEM #19 CUT TO LENGTH FOR PROPER EXTENSION OF OL1 (6"-12") FROM STRUCTURE. ATTACH ITEM #16 TO UNTHREADED CONDUIT TO COMPLETE ASSEMBLY.
- MOUNT BEACON HINGE SO LENS WILL OPEN UNOBSTRUCTED BY STRUCTURE.
- ON AM TOWER APPLICATIONS, KEEP GROUND LUG FROM BEING CONNECTED TO EARTH GROUND. GROUND TO THE TOWER ONLY.
- THIS DRAWING IS PROVIDED AS A GENERAL REFERENCE. TWR LIGHTING, INC. DOCUMENTATION SUPERSEDES THIS DRAWING & SHOULD BE REVIEWED PRIOR TO INSTALLATION OF THIS SYSTEM.
- USE COUPLING THAT IS PROVIDED WITH ITEM #19.
- CONDUIT SIZE BASED ON USING TYPE THHN WIRE.
- USE RIGID GALVANIZED STEEL CONDUIT.
- BREATHERS ALLOW FOR CIRCULATION OF AIR TO PREVENT CONDENSATION.

LK2A2/3LED TOWER LIGHTING KIT
(TOWERS 351'/108M TO 700'/213M)

PROD DEPT
SERV DEPT
ENGINEER

TWR Lighting, Inc.
Enlightened Technology®

DRAWN BY
E.A.SALAZAR

SHEET SIZE
B

SHEET QTY.
1 OF 1

DATE
06/16/04

SCALE
N.T.S.

DWG. NO.
801-02

The use of non-OEM parts or modifications to original equipment design will void the manufacturer warranty and could invalidate the assurance of complying with FAA requirements as published in Advisory Circular 150/5345-43.

NOTICE: The drawings and photographic images contained herein are the sole property of TWR Lighting, Inc. All information contained herein that is not generally known shall be considered confidential except to the extent the information has been previously established. The drawings and photographic images contained herein may not be reproduced, copied or used as the basis for manufacture or sale or promotion or any other purpose without the expressed written permission of TWR Lighting, Inc.

11/18/2014

DATE:

UPDATED LEDS

LTR.

REVISION

AC UNITS CURRENT MEASUREMENT RM22JA31MRSP01

120VAC PRODUCT SPECIFIC SETTINGS

QTY.	PART NO.	INPUT	#1	#2	#3	#4	#5
1	OL1_LED2	E2	*<1	30	20	30	OFF
2	OL1_LED2	E2	*<1	50	20	30	OFF
3	OL1_LED2	E3	*<1	15	20	30	OFF
4	OL1_LED2	E3	*<1	25	20	30	OFF
6	OL1_LED2	E3	*<1	35	20	30	OFF
8	OL1_LED2	E3	*<1	45	15	30	OFF
10	OL1_LED2	E3	*<1	60	10	30	OFF
1	LED BEACON2	E3	*<1	20	20	30	OFF
1	LED BEACON2A	E3	*<1	15	20	30	OFF
1	LED BEACON2(T)	E3	*<1	25	20	30	OFF
1	STLDBEACON2	E3	*<1	20	20	30	OFF
1	STLDBEACON2A	E3	*<1	15	20	30	OFF
2	STLDBEACON2A	E3	*<1	25	20	30	OFF
2	STLDBEACON2A	E3	*<1	25	20	30	OFF

*NO MEMORY

FUNCTIONS

- 1) Configuration: Selection of operation mode (<1 / >1 / >1<) with or without memory.
- 2) Adjustment of current threshold as % of setting range.
- 3) Hysteresis adjustment from 5% to 50%.
- 4) Time Delay adjustment from 0.1 to 30sec.
- 5) Diagnostic button.
- 6) Yellow indicator light (**See conditions below**)
- 7) Dial Pointer (Green) LED
 - Steady green LED indicates that supply to the RM22 is present
 - Flashing green LED indicates a setting has been changed that requires a power cycle.

YELLOW LED CONDITIONS

NOTE: () ASTERISK INDICATES LED CONDITIONS OPERATE OPPOSITE FROM RM22JA31MR MODULE

*

- ➔ Steady Burn Fixtures
 - Yellow light *off : Normal condition (no alarm)
 - Yellow light flashing : Undercurrent condition detected and time delay initiated
 - Yellow light *on : Alarm condition
- ➔ Flashing Fixtures
 - Yellow light flashing inconsistent : Normal condition (no alarm)
 - Yellow light flashing consistent : Under current condition detected and time delay initiated

NOTE : To help troubleshoot or to set the sense current, turn the time delay to 0sec. Adjusting the current setting should only be done if it is known that all the lights are functioning. For Steady Burn adjust the current until the yellow LED comes *off, and the relay is not dropping in and out. For Flashing Fixtures adjust the current setting until the yellow light starts to flash. This is the normal condition setting. Return the time delay back to 30sec.

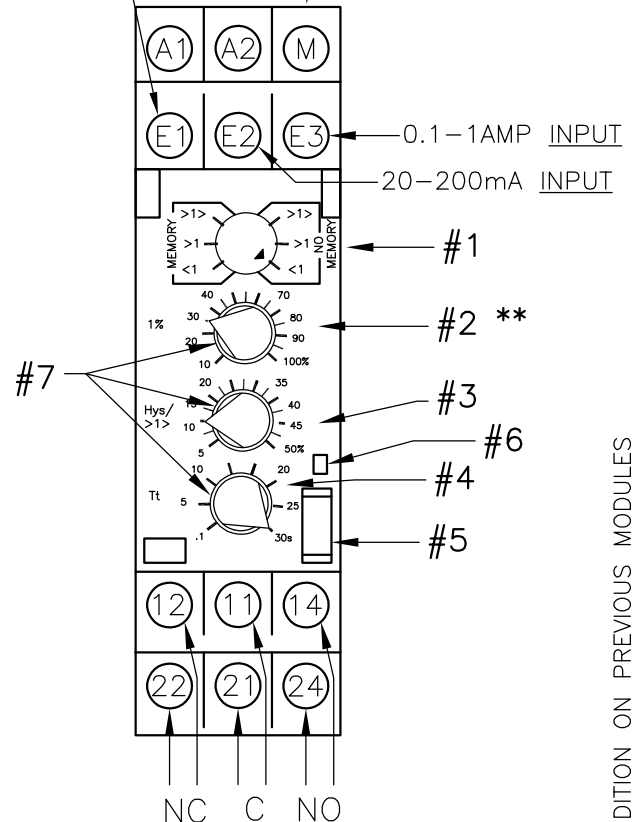
- Yellow light *on : Alarm condition

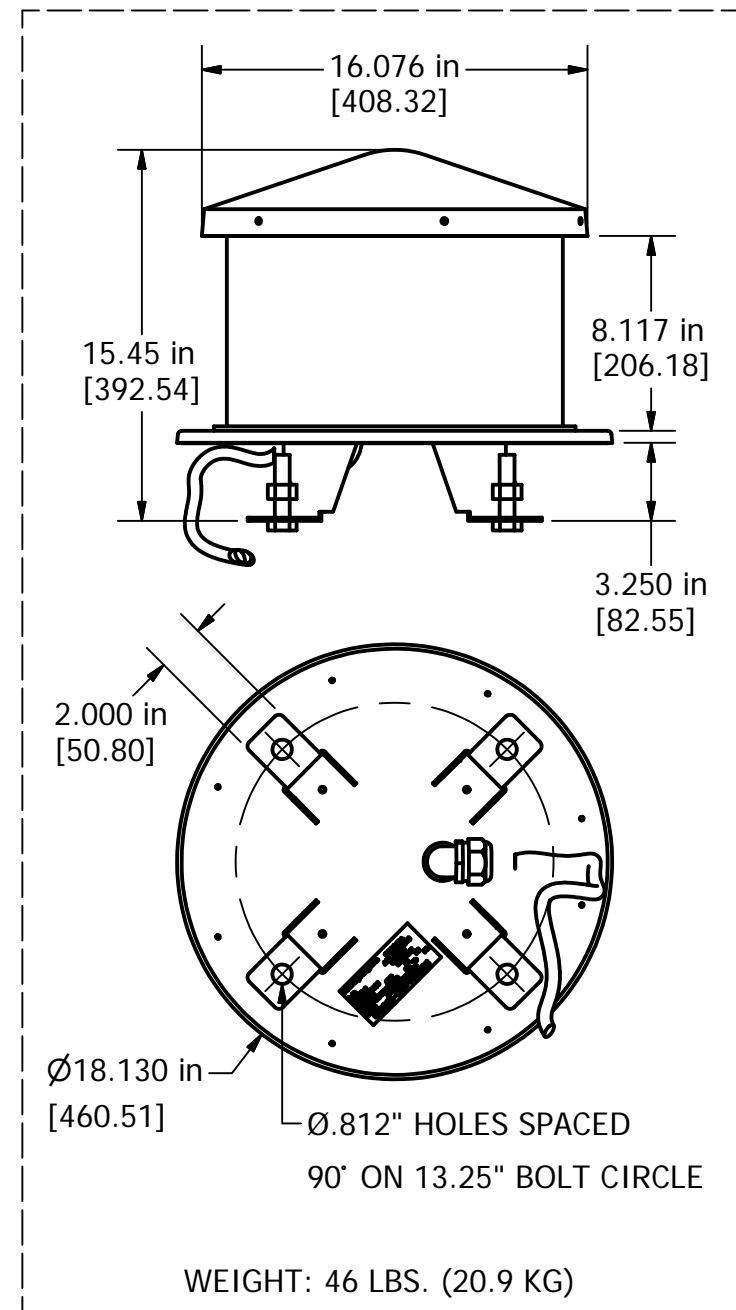
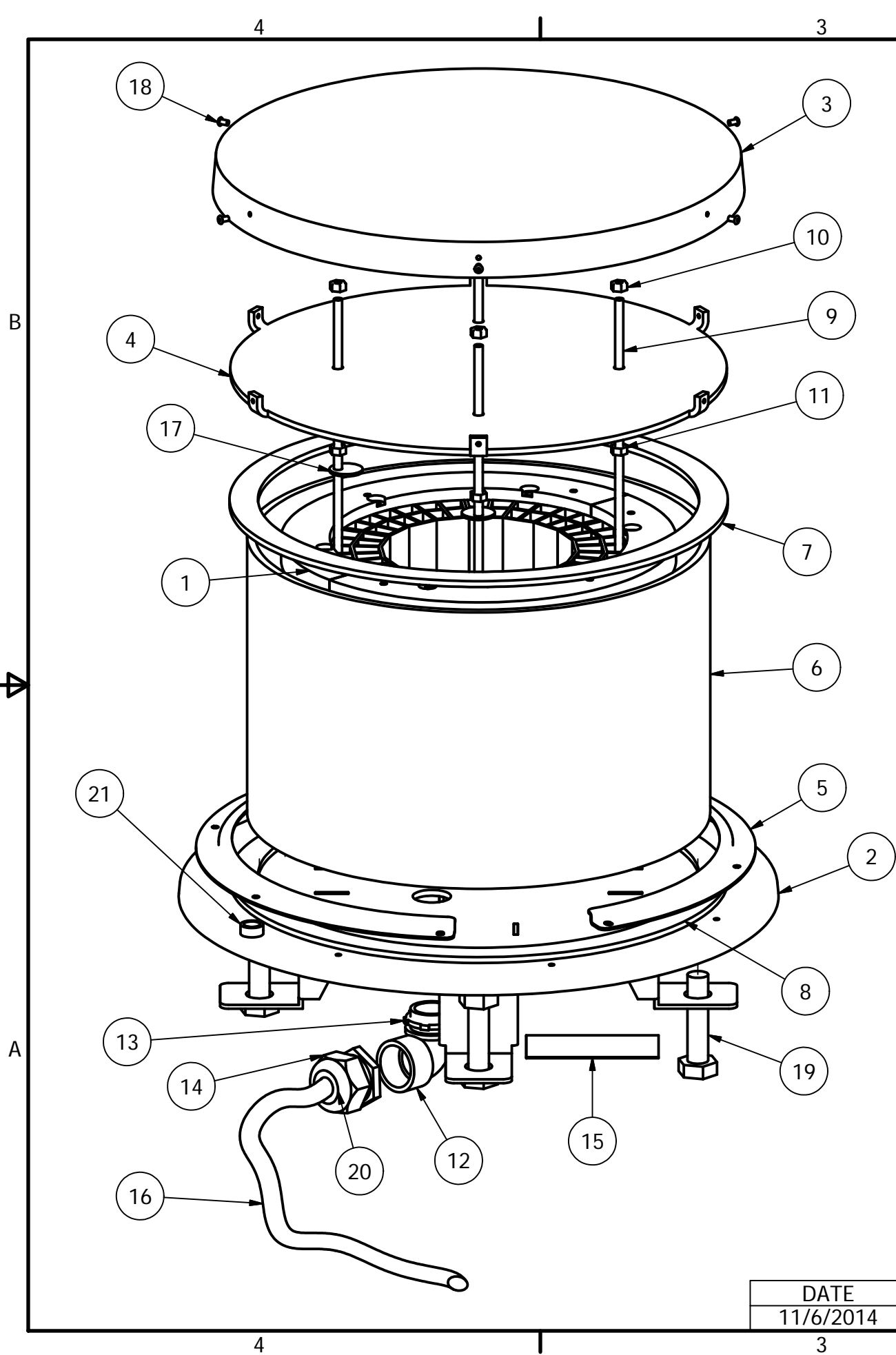
** Due to current draw tolerances slight adjustments to setting #2 may be needed for proper alarming.

CONTROL VOLTAGE INPUT

4-40mA INPUT

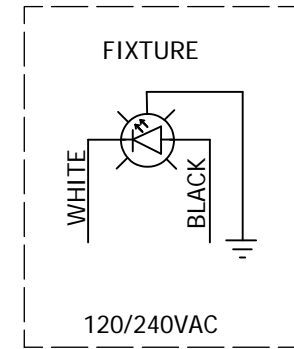
OUTPUT TO LOAD





Parts List			
ITEM	QTY	PART NUMBER	DESCRIPTION
1	1	LEDLITEENG2	ORGA L-864 LED LIGHT ENGINE 120/240VAC
2	1	100672	LEDBEACON BASE PLATE
3	1	100344	CAP DUAL BEACON
4	1	100673	LEDBEACON LID PLATE
5	2	100337	LENS RETAINER RING
6	1	STLDBCTUBE2	CLEAR ACRYLIC TUBE
7	1	STBEAGSK4	GASKET NEOPRENE 13 1/8 X 15 OD X
8	1	STBEAGSKT	GASKET NEOPRENE 13 1/4 x 15
9	4	100727	14-20 X 9.875" DE 304 S.S. ORG
10	4	1420SSNUTN	1/4-20 NUT W/NYLON INSERT 304
11	4	1420NUT	1/4-20 NUT 304 S/S
12	1	EL190S	1" 90 DEGREE SHORT ELBOW GALV.
13	1	A315	1" CONDUIT LOCKNUT GALV.
14	1	CC-NPT34-G	3/4" NPT CORD CONNECTOR .500"
15	1	STCONLAB2	100223 PRODUCT LABEL
16	21'	CSO14-3	S.O. CORD 14AWG/3 CONDUCTOR
17	2	100606M	LED LIGHT ENGINE TIE DOWN WASH
18	6	18PRSS-2	1/8 X .400 SS POP RIVET #44
19	4	58X112	5/8 X 1-1/2 HEX BOLT
20	1	RE32	1" TO 3/4" REDUCER, GALV.
21	1	2-10000	CIRCULAR SPIRIT LEVEL
* 22	8	1032X38PHW	10-32X3/8 PHILLS HD CAPTIVE SCREW

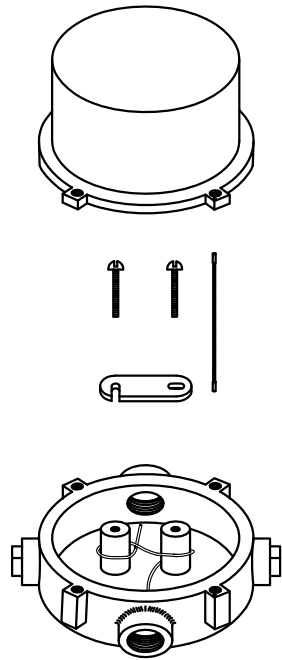
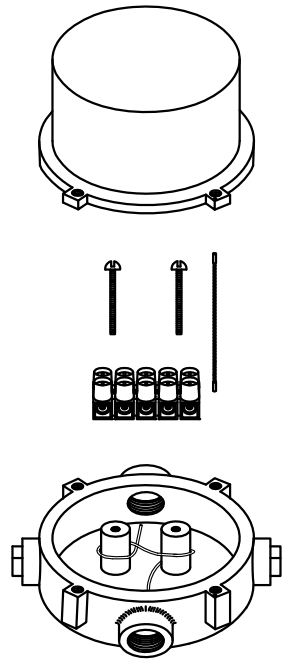
* = ITEMS NOT SHOWN



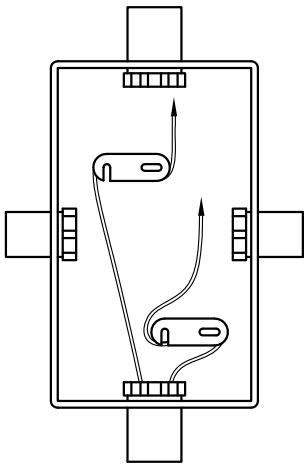
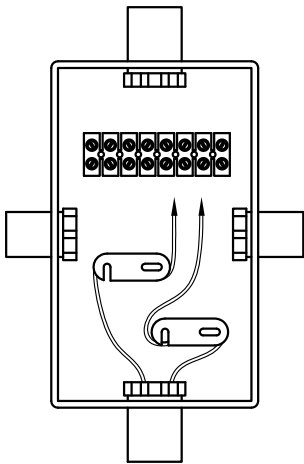
* GROUND WIRE MUST BE CONNECTED TO PROPERLY PROTECT POWER SUPPLY. FAILURE TO GROUND WILL VOID ALL WARRANTIES.

DATE	AUTHOR	REV	DESCRIPTION
11/6/2014	JZamorano	C	UPDATED BOM

DRAWN VHernandez	9/4/2007	TWR Lighting, Inc. PARK Enlightened Technology®		
CHECKED				
QA		TITLE		
MFG		LEDBEACON2 ASSEMBLY		
APPROVED				
		SIZE B	DWG NO 100761	REV C
		SCALE 1/4	SHEET 1 OF 1	



JB-5 AND JB-0
3/4" JUNCTION BOX



JB-8 AND JB-8SR
1" JUNCTION BOX

USING THIS JUNCTION BOX METHOD SPACING IS 100 FEET MAXIMUM.

NOTES:

- 1) DRAWING ILLUSTRATES METHOD OF STRAIN RELIEVING WIRE. USE THIS METHOD ON ALL JUNCTION BOXES.
- 2) THE NATIONAL ELECTRICAL CODE-ARTICLE 300-19-B3 REQUIRES CONDUCTORS IN A VERTICAL CONDUIT BE SUPPORTED TO RELIEVE STRAIN ON TERMINAL BLOCK CONNECTIONS.
- 3) SKETCH ILLUSTRATES METHOD OF STRAIN RELIEVING A SINGLE CONDUCTOR. SEVERAL CONDUCTORS MAY BE GROUPED TOGETHER.
- 4) CONDUCTORS MAY BE MIXED BUT SHOULD NOT TAKE UP MORE THAN 40% OF CONDUIT'S INSIDE AREA.

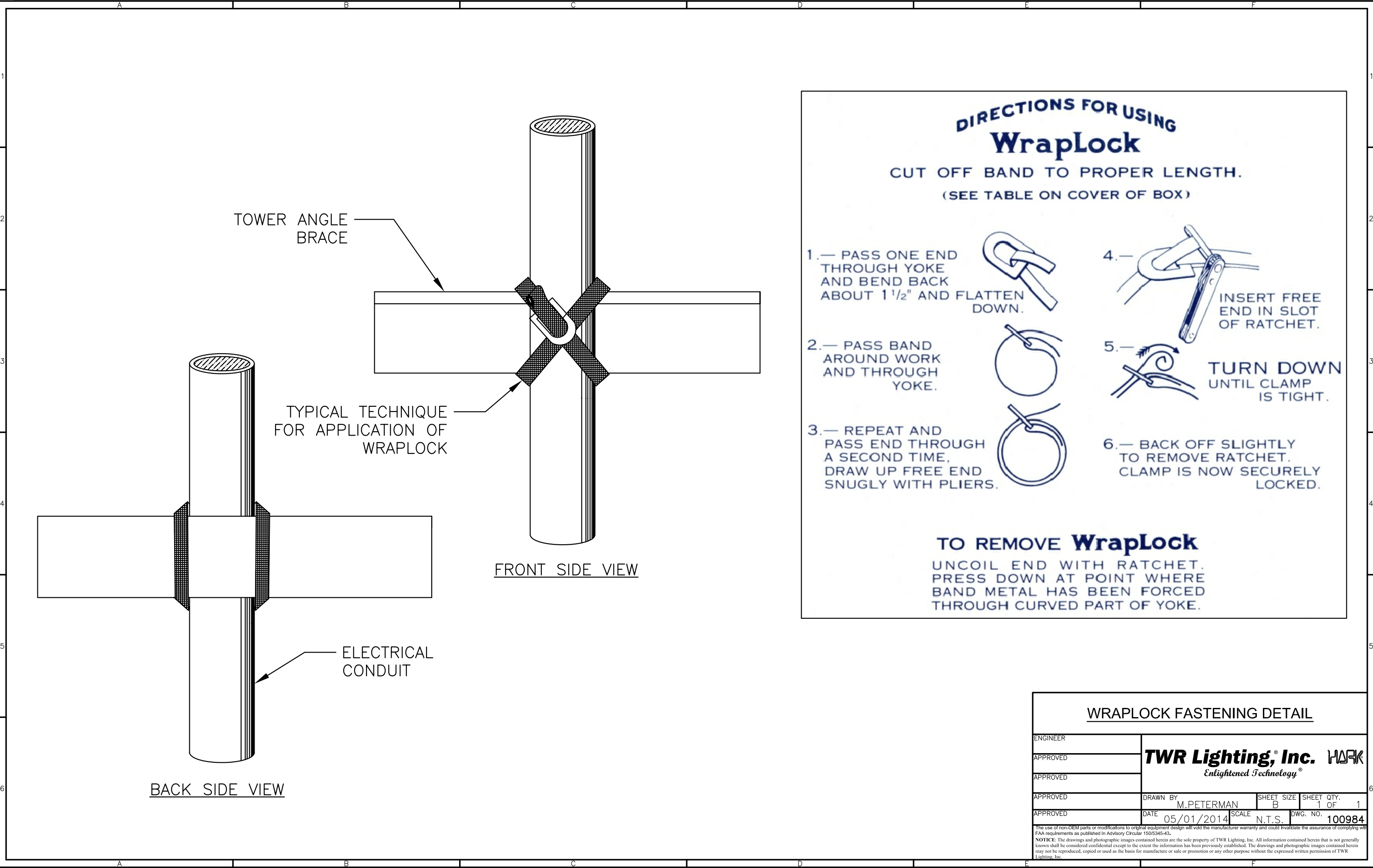
AWG WIRE SIZE	MAX. NUMBER WIRES IN 3/4" CONDUIT	MAX. NUMBER WIRES IN 1" CONDUIT	WIRE AREA SQ. INCHES	WEIGHT PER 100 FEET
12 THHN	16	26	0.0117	2.50
10 THHN	10	17	0.0184	4.10
8 THHN	6	9	0.0373	6.70
6 THHN	4	7	0.0519	10.30
4 THHN	2	4	0.0845	16.20

JUNCTION AND STRAIN RELIEF BOXES

PROD DEPT	TWR Lighting, Inc. Enlightened Technology®				
SERV DEPT					
ENGINEER					
DRAWN BY	G.D. SEBEK	SHEET SIZE	B	SHEET QTY.	1 OF 1
DATE	07/26/93	SCALE	N.T.S.	DWG. NO.	100089

9/29/00	(A)	3	UPDATED NOTES
DATE:	LTR.		REVISION

The use of non-DBM parts or modifications to original equipment design will void the manufacturer warranty and could invalidate the assurance of complying with FAA requirements as published in Advisory Circular 150/5345-43.
NOTICE: The drawings and photographic images contained herein are the sole property of TWR Lighting, Inc. All information contained herein that is not generally known shall be considered confidential except to the extent the information has been previously established. The drawings and photographic images contained herein may not be reproduced, copied or used as the basis for manufacture or sale or promotion or any other purpose without the expressed written permission of TWR Lighting, Inc.



**DIRECTIONS FOR USING
WrapLock**

CUT OFF BAND TO PROPER LENGTH.
(SEE TABLE ON COVER OF BOX)

1.— PASS ONE END THROUGH YOKE AND BEND BACK ABOUT 1 1/2" AND FLATTEN DOWN.



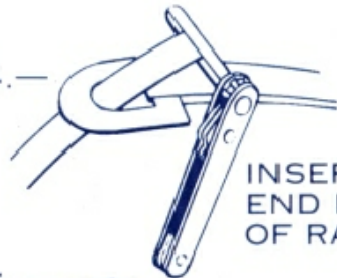
2.— PASS BAND AROUND WORK AND THROUGH YOKE.



3.— REPEAT AND PASS END THROUGH A SECOND TIME, DRAW UP FREE END SNUGLY WITH PLIERS.



4.—



INSERT FREE END IN SLOT OF RATCHET.

5.—



TURN DOWN UNTIL CLAMP IS TIGHT.


6.—

BACK OFF SLIGHTLY TO REMOVE RATCHET. CLAMP IS NOW SECURELY LOCKED.

TO REMOVE WrapLock

UNCOIL END WITH RATCHET. PRESS DOWN AT POINT WHERE BAND METAL HAS BEEN FORCED THROUGH CURVED PART OF YOKE.

WRAPLOCK FASTENING DETAIL

ENGINEER	TWR Lighting, Inc.  <i>Enlightened Technology®</i>		
APPROVED			
APPROVED			
APPROVED	DRAWN BY M.PETERMAN	SHEET SIZE B	SHEET QTY. 1 OF 1
APPROVED	DATE 05/01/2014	SCALE N.T.S.	DWG. NO. 100984

The use of non-OEM parts or modifications to original equipment design will void the manufacturer warranty and could invalidate the assurance of complying with FAA requirements as published in Advisory Circular 150/5345-43.
NOTICE: The drawings and photographic images contained herein are the sole property of TWR Lighting, Inc. All information contained herein that is not generally known shall be considered confidential except to the extent the information has been previously established. The drawings and photographic images contained herein may not be reproduced, copied or used as the basis for manufacture or sale or promotion or any other purpose without the expressed written permission of TWR Lighting, Inc.