

# **TWR Lighting, Inc.**

*Enlightened Technology<sup>SM</sup>*

4300 WINDFERN RD #100 HOUSTON TX 77041-8943

VOICE (713) 973-6905 FAX (713) 973-9352

web: [www.twrlighting.com](http://www.twrlighting.com)

## **IMPORTANT!!!**

PLEASE TAKE THE TIME TO FILL OUT THIS FORM COMPLETELY. FILE IT IN A SAFE PLACE. IN THE EVENT YOU EXPERIENCE PROBLEMS WITH, OR HAVE QUESTIONS CONCERNING YOUR CONTROLLER, THE FOLLOWING INFORMATION IS NECESSARY TO OBTAIN PROPER SERVICE AND PARTS.

MODEL # \_\_\_\_\_ A0M-TSSLED 48VDC \_\_\_\_\_

SERIAL # \_\_\_\_\_

PURCHASE DATE \_\_\_\_\_

PURCHASED FROM \_\_\_\_\_

# **TWR Lighting, Inc.**

*Enlightened Technology<sup>SM</sup>*

## **A0M-TSSLED 48VDC CONTROLLER**

---

### **TABLE OF CONTENTS**

<b>1.0</b>	<b>GENERAL INFORMATION .....</b>	<b>1</b>
<b>2.0</b>	<b>INSTALLATION .....</b>	<b>2</b>
2.1	MOUNTING THE CONTROL CABINET .....	2
2.2	EXTERNAL PHOTCELL WIRING .....	3
2.3	POWER WIRING.....	3
2.4	LED OBSTRUCTION FIXTURE WIRING .....	3
2.5	LED OBSTRUCTION FIXTURE ALARM WIRING.....	4
<b>3.0</b>	<b>THEORY OF OPERATION .....</b>	<b>6</b>
3.1	POWER SUPPLY.....	6
3.2	LED OBSTRUCTION FIXTURE .....	6
<b>4.0</b>	<b>MAINTENANCE GUIDE .....</b>	<b>7</b>
4.1	RED OBSTRUCTION FIXTURE .....	7
4.2	CONTROLLER.....	7
4.3	PHOTOCCELL.....	7
<b>5.0</b>	<b>MAJOR COMPONENTS PARTS LIST .....</b>	<b>8</b>
<b>6.0</b>	<b>SUGGESTED SPARE PARTS LIST .....</b>	<b>9</b>

**WARRANTY & RETURN POLICY**

**RETURN MERCHANDISE AUTHORIZATION (RMA) FORM**

# **TWR Lighting, Inc.**

*Enlightened Technology<sup>SM</sup>*

## **A0M-TSSLED 48VDC CONTROLLER**

---

### **APPENDIX**

CHASSIS COMPONENT LAYOUT.....	1224-R
SCHEMATIC LAYOUT .....	1224-S

# **TWR Lighting, Inc.**

*Enlightened Technology<sup>SM</sup>*

## **A0M-TSSLED 48VDC CONTROLLER**

---

### **1.0 GENERAL INFORMATION**

(Refer to Drawing 1224-R)

The TWR Lighting, Inc. Model A0M-TSSLED 48VDC Controller is for the application of one (1) to four (4) LED obstruction fixtures.

The LED obstruction lights burn steady.

A by-pass switch (SW1) allows the controller to be turned on during daylight hours without covering the photocell. This is particularly helpful since the controller can be mounted indoors while the photocell is outdoors. SW1 can be operated by closing the blade switch that is mounted on the panel of the controller.

#### **NORMAL OPERATING POSITION OF SW1 IS IN THE OPEN POSITION.**

Power supplied to the controller shall be 48VDC.

Controller functions that are monitored by remote alarms in the form of dry contact closures (Form C) are as follows:

<b>POWER FAILURE</b>	Monitors 48VDC to the controller. Alarms in the event of power failure, or tripped circuit breaker.
<b>LIGHTS "ON"</b>	Gives an indication whenever the controller is activated.
<b>LED OBSTRUCTION LIGHTS</b>	Will give an alarm when one (1) LED obstruction fixture fails.

# **TWR Lighting, Inc.**

*Enlightened Technology<sup>SM</sup>*

## **A0M-TSSLED 48VDC CONTROLLER**

### **2.0 INSTALLATION**

#### **2.1 MOUNTING THE CONTROL CABINET**

The power supply control cabinet can be located at the base of the structure or in an equipment building. Mounting footprints are shown on drawing 1224-R. Power wiring to the control cabinet should be in accordance with local methods and National Electrical Codes (NEC).

**2.1.1** If the control cabinet is mounted inside an equipment building, the photocell should be mounted vertically on ½" conduit outside the building above the eaves facing north. The photocell should be positioned so that it does not "see" ambient light, which will prevent it from switching to the nightmode.

**2.1.2** If the control cabinet is mounted outside an equipment building, the photocell should be mounted vertically on ½" conduit so the photocell is above the control cabinet. Care must be taken to assure that the photocell does not "see" any ambient light that would prevent it from switching into the nightmode.

The wiring from the photocell, the battery, and the sidelights should enter the control cabinet through the watertight connectors in the bottom of the cabinet. Inside the cabinet, the connections will be made on the terminal strips and fuse holders located at the bottom of the chassis. These connections are made as follows:

# **TWR Lighting, Inc.**

*Enlightened Technology<sup>SM</sup>*

## **A0M-TSSLED 48VDC CONTROLLER**

### **2.2 EXTERNAL PHOTOCELL WIRING**

(Refer to Drawing 1224-R)

**2.2.1** Connect the **BLACK** wire from the photocell to terminal block TB2 marked “-.”

**2.2.2** Connect the **BLUE** wire from the photocell to terminal block TB2 marked “SSR.”

**2.2.3** Connect the **RED** wire from the photocell to terminal block TB2 marked “+.”

### **2.3 POWER WIRING**

(Refer to Drawing 1224-R)

**2.3.1** Power wiring to the control cabinet should be in accordance with local methods and National Electrical Codes (NEC).

**2.3.2** Connect the positive 48VDC to terminal block TB1 marked “+.”

**2.3.3** Connect the negative wire to one (1) of the terminal blocks on TB1 marked “-.”

**2.3.4** Connect the ground to the aluminum mounting plate.

### **2.4 LED OBSTRUCTION FIXTURE WIRING**

(Refer to Drawing 1224-R)

**2.4.1** Connect the **RED** from the obstruction lights to the circuit breaker marked “S.”

**2.4.2** Connect the **BLACK** wire to the terminal block TB1 marked “-.”

# **TWR Lighting, Inc.**

*Enlightened Technology<sup>S.M.</sup>*

## **A0M-TSSLED 48VDC CONTROLLER**

### **2.5 LED OBSTRUCTION FIXTURE ALARM WIRING**

(Refer to Drawings 1224-R and 1224-S)

**2.5.1** Alarm relays K1, K2, and Module M1 are provided for independent contact closures for: Power Failure, Lights “ON,” and LED Obstruction Fixture Burnout.

**2.5.2** Alarm wiring: To utilize all of the alarms, the customer will need three (3) pair of wires to interface with the alarm device.

**LED Obstruction Fixture Burnout:** Connect first wire from the first pair to Module M1, terminal #18, for normally open, (or) terminal #16, for normally closed monitoring.

Connect second wire from the first pair to Module M1, terminal 15, for alarm common.

**Power Failure Alarm:**

Connect first wire from the second pair to relay K1, terminal #3, for normally closed, (or) terminal #4, for normally open monitoring.

Connect second wire from the second pair to relay K1, terminal #1.

**Lights “ON” Alarm:**

Connect first wire from the third pair to relay K2, terminal #3, for normally closed, (or) terminal #6, for normally open monitoring.

Connect second wire from the third pair to relay K2, terminal #1.

# **TWR Lighting, Inc.**

*Enlightened Technology<sup>SM</sup>*

## **A0M-TSSLED 48VDC CONTROLLER**

**2.5.3** Testing: To test alarms, follow the procedures using the “ohm” meter between alarm common and alarm points.

<b>Power Failure</b>	Open 48VDC circuit.
<b>Lights “ON”</b>	Close photocell by-pass switch (SW1) or cover the photocell. After testing, open SW1.
<b>LED Obstruction Fixture</b>	Open fuse holder on the controller panel.



# **TWR Lighting, Inc.**

*Enlightened Technology<sup>SM</sup>*

## **A0M-TSSLED 48VDC CONTROLLER**

### **3.0 THEORY OF OPERATION**

#### **3.1 Power Supply**

48VDC enters the controller from the battery. Line sits at the photocell waiting to be switched, and also keeps the power failure relay K1 energized. When the photocell is activated, SSR energizes K2 “Lights On” relay. This can also be accomplished by using the photocell by-pass switch (SW1).

#### **3.2 LED Obstruction Lights**

SSR is being sent to Module M1, and then to the fuse “S.” Module M1 is the current sensor for the LED obstruction fixtures. If one (1) LED obstruction fixture burns out, then Module M1 will send contact alarm on pin 16, or pin 18.

# **TWR Lighting, Inc.**

*Enlightened Technology<sup>SM</sup>*

## **A0M-TSSLED 48VDC CONTROLLER**

### **4.0 MAINTENANCE GUIDE**

#### **4.1 LED OBSTRUCTION FIXTURE**

No scheduled maintenance is required. Perform on an as needed basis.

#### **4.2 CONTROLLER**

No scheduled maintenance is required. Perform on an as needed basis.

#### **4.3 PHOTOCELL**

The photocell is a sealed unit. No maintenance is needed or required other than replacement as necessary.

# **TWR Lighting, Inc.**

*Enlightened Technology<sup>S.M.</sup>*

## **A0M-TSSLED 48VDC CONTROLLER**

### **5.0 MAJOR COMPONENTS PARTS LIST**

<b>QUANTITY</b>	<b>PART NUMBER</b>	<b>DESCRIPTION</b>
1	7051-48VDC	Photocell 48VDC
1	Q202013PCI	Enclosure
2	2275H	Sockets (K1 & K2)
6	0115116.07	Terminal Blocks (TB1 & TB2)
1	0115657.25	Fuse Holder (S)
2	0206351.16	End Stop
1	LY248	DPDT Relay (K1 & K2)
1	0115686.13	10 amp Switch (SW1)
1	RM4JA31MW	Current Sensor (M1)
1	HLW12A1Z	5 ohm 12W Resistor (R1)
2	GDC2	2 amp Fuse (F1)

# **TWR Lighting, Inc.**

*Enlightened Technology<sup>SM</sup>*

## **A0M-TSSLED 48VDC CONTROLLER**

### **6.0 SUGGESTED SPARE PARTS LIST**

<b>QUANTITY</b>	<b>PART NUMBER</b>	<b>DESCRIPTION</b>
1	7051-48VDC	Photocell 48VDC
1	GDC2	2 amp Fuse (F1)

# **TWR Lighting, Inc.**

*Enlightened Technology<sup>SM</sup>*

## **Warranty & Return Policy**

**TWR Lighting, Inc. (“TWR”) warrants its products (other than “LED Product”)** against defects in design, material (excluding incandescent bulbs) and workmanship for a period ending on the earlier of two (2) years from the date of shipment or one (1) year from the date of installation.

**TWR Lighting, Inc. (“TWR”) warrants its “LED Product”** against defects in design, material and workmanship for a period of five (5) years from the date of shipment. TWR, at its sole option, will, itself, or through others, repair, replace or refund the purchase price paid for “LED Product” that TWR verifies as being inoperable due to original design, material or workmanship. All warranty replacement “LED Product” is warranted only for the remainder of the original warranty of the “LED Product” replaced. Replacement “LED Product” will be equivalent in function, but not necessarily identical, to the replaced “LED Product.”

**TWR Lighting, Inc. (“TWR”) warrants its “LED Product”** against light degradation for a period of five (5) years from the date of installation. TWR, at its sole option, will, itself, or through others, repair, replace or refund the purchase price paid for “LED Product” that TWR verifies as failing to meet 70% of the minimum intensity requirements as defined in the FAA Advisory Circular 150/5345-43E dated 10/19/95. All warranty replacement “LED Product” is warranted only for the remainder of the original warranty of the “LED Product” replaced. Replacement “LED Product” will be equivalent in function, but not necessarily identical, to the replaced “LED Product.”

**Replacement parts (other than “LED Product”) are warranted for 90 days from the date of shipment.**

Conditions not covered by this Warranty, or which might void this Warranty are as follows:

- Improper Installation or Operation
- Misuse
- Abuse
- Unauthorized or Improper Repair or Alteration
- Accident or Negligence in Use, Storage, Transportation, or Handling
- Any Acts of God or Nature
- **Non-OEM Parts**

**The use of non-OEM parts or modifications to original equipment design will void the manufacturer warranty and could invalidate the assurance of complying with FAA requirements as published in Advisory Circular 150/5345-43.**

**Field Service – Repairs are warranted for 90 days from the date of service**, except where TWR has made recommendations that were not adhered to that may cause premature failure on previous repairs. Labor, Travel, and Tower Climb are not covered under warranty. Customer shall be obligated to pay for all incurred charges not related to warranty. All warranty repairs are performed by trained TWR personnel, or dispatched through an extensive network of certified and insured Service Representatives.

# **TWR Lighting, Inc.**

*Enlightened Technology<sup>SM</sup>*

## **Warranty & Return Policy**

(continued)

### **Return Policy**

**Return Terms** – You must first contact our Customer Service Department at **713-973-6905** to acquire a Return Merchandise Authorization (RMA) number in order to return the product(s). Please have the following information available when requesting an RMA number:

- The contact name and phone number of the tower owner
- The contact name and phone number of the contractor
- The site name and number
- The part number(s)
- The serial number(s) (if any)
- A description of the problem
- The billing information
- The Ship To address

**This RMA number must be clearly visible on the outside of the box.** If the RMA number is not clearly labeled on the outside of the box, your shipment will be refused. Please ensure the material you are returning is packaged carefully. **The warranty is null and void if the product(s) are damaged in the return shipment.**

**All RMAs must be received by TWR LIGHTING, INC., 4300 WINDFERN RD #100, HOUSTON TX 77041-8943, within 30 days of issuance.**

Upon full compliance with the Return Terms, TWR will replace, repair and return, or credit product(s) returned by the customer. It is TWR's sole discretion to determine the disposition of the returned item(s).

**Replacements** – Replacement part(s) will be shipped and billed to the customer for product(s) considered as Warranty, pending return of defective product(s). When available, a certified reconditioned part is shipped as warranty replacement with a Return Merchandise Authorization (RMA) number attached. Upon receipt of returned product(s), inspection, testing, and evaluation will be performed to determine the cause of defect. The customer is then notified of the determination of the testing.

- Product(s) that is deemed defective and/or unrepairable and covered under warranty - a credit will be issued to the customer's account.
- Product(s) found to have no defect will be subject to a **\$60.00 per hour testing charge (1 hour minimum), which will be invoiced to the customer.** At this time the customer may decide to have the tested part(s) returned and is responsible for the return charges.
- Product(s) under warranty, which the customer does not wish returned, the customer will be issued a credit against the replacement invoice.

# **TWR Lighting, Inc.**

*Enlightened Technology<sup>SM</sup>*

## **Warranty & Return Policy**

(continued)

**Repair & Return** – A Return Merchandise Authorization (RMA) will be issued for all part(s) returned to TWR for repair. Upon receipt of returned product(s), inspection, testing and evaluation will be performed to determine the cause of defect. The customer is then notified of the determination of the testing. If the returned part(s) is deemed unrepairable, or the returned part(s) is found to have no defect, the customer will be subject to a **\$60.00 per hour testing charge (1 hour minimum), which will be invoiced to the customer.** Should the returned parts be determined to be repairable, a written estimated cost of repair will be sent to the customer for their written approval prior to any work being performed. In order to have the tested part(s) repaired and/or returned, the customer must issue a purchase order and is responsible for the return shipping charges.

**Return to Stock** – Any order that is returned to TWR for part(s) ordered incorrectly by the customer, or unneeded upon receipt, the customer is required to pay a **20% restocking fee.** A credit will be issued once it is determined that the Return Terms are met.

**Credits** – Credits are issued once it is determined that all of the Warranty and Return Terms are met. All credits are processed on Fridays. In the event a Friday falls on a Holiday, the credit will be issued on the following Friday.

**Freight** – All warranty replacement part(s) will be shipped via ground delivery and paid for by TWR. Delivery other than ground is the responsibility of the customer.

**REMEDIES UNDER THIS WARRANTY ARE LIMITED TO PROVISIONS OF REPLACEMENT PARTS AND REPAIRS AS SPECIFICALLY PROVIDED. IN NO EVENT SHALL TWR BE LIABLE FOR ANY OTHER LOSSES, DAMAGES, COSTS OR EXPENSES INCURRED BY THE CUSTOMER, INCLUDING, BUT NOT LIMITED TO, LOSS FROM FAILURE OF THE PRODUCT(S) TO OPERATE FOR ANY TIME, AND ALL OTHER DIRECT, INDIRECT, SPECIAL, INCIDENTAL, OR CONSEQUENTIAL DAMAGES, INCLUDING ALL PERSONAL INJURY OR PROPERTY DAMAGE DUE TO ALLEGED NEGLIGENCE, OR ANY OTHER LEGAL THEORY WHATSOEVER. THIS WARRANTY IS MADE BY TWR EXPRESSLY IN LIEU OF ALL OTHER WARRANTIES, WHETHER EXPRESSED OR IMPLIED. WITHOUT LIMITING THE GENERALITY OF THE FORGOING, TWR MAKES NO WARRANTY OF MERCHANTABILITY OR FITNESS OF THE PRODUCT(S) FOR ANY PARTICULAR PURPOSE. TWR EXPRESSLY DISCLAIMS ALL OTHER WARRANTIES.**

# **TWR Lighting, Inc.**

*Enlightened Technology<sup>SM</sup>*

## **RETURN MERCHANDISE AUTHORIZATION (RMA) FORM**

**RMA#:** \_\_\_\_\_ **DATE:** \_\_\_\_\_

**CUSTOMER:** \_\_\_\_\_

**CONTACT:** \_\_\_\_\_ **PHONE NO.:** \_\_\_\_\_

**ITEM DESCRIPTION (PART NO.):** \_\_\_\_\_

**MODEL NO.:** \_\_\_\_\_ **SERIAL NO.:** \_\_\_\_\_

**ORIGINAL TWR INVOICE NO.:** \_\_\_\_\_ **DATED:** \_\_\_\_\_

**DESCRIPTION OF PROBLEM:** \_\_\_\_\_

**SIGNED:** \_\_\_\_\_ **DATE NEEDED:** \_\_\_\_\_

**RETURN ADDRESS:** \_\_\_\_\_



# **TWR Lighting, Inc.**

*Enlightened Technology<sup>SM</sup>*

## RETURN MERCHANDISE AUTHORIZATION (RMA) FORM

RMA#: \_\_\_\_\_ DATE: \_\_\_\_\_

CUSTOMER: \_\_\_\_\_

\_\_\_\_\_

CONTACT: \_\_\_\_\_ PHONE NO.: \_\_\_\_\_

ITEM DESCRIPTION (PART NO.): \_\_\_\_\_

\_\_\_\_\_

MODEL NO.: \_\_\_\_\_ SERIAL NO.: \_\_\_\_\_

ORIGINAL TWR INVOICE NO.: \_\_\_\_\_ DATED: \_\_\_\_\_

DESCRIPTION OF PROBLEM: \_\_\_\_\_

\_\_\_\_\_

\_\_\_\_\_

\_\_\_\_\_

SIGNED: \_\_\_\_\_ DATE NEEDED: \_\_\_\_\_

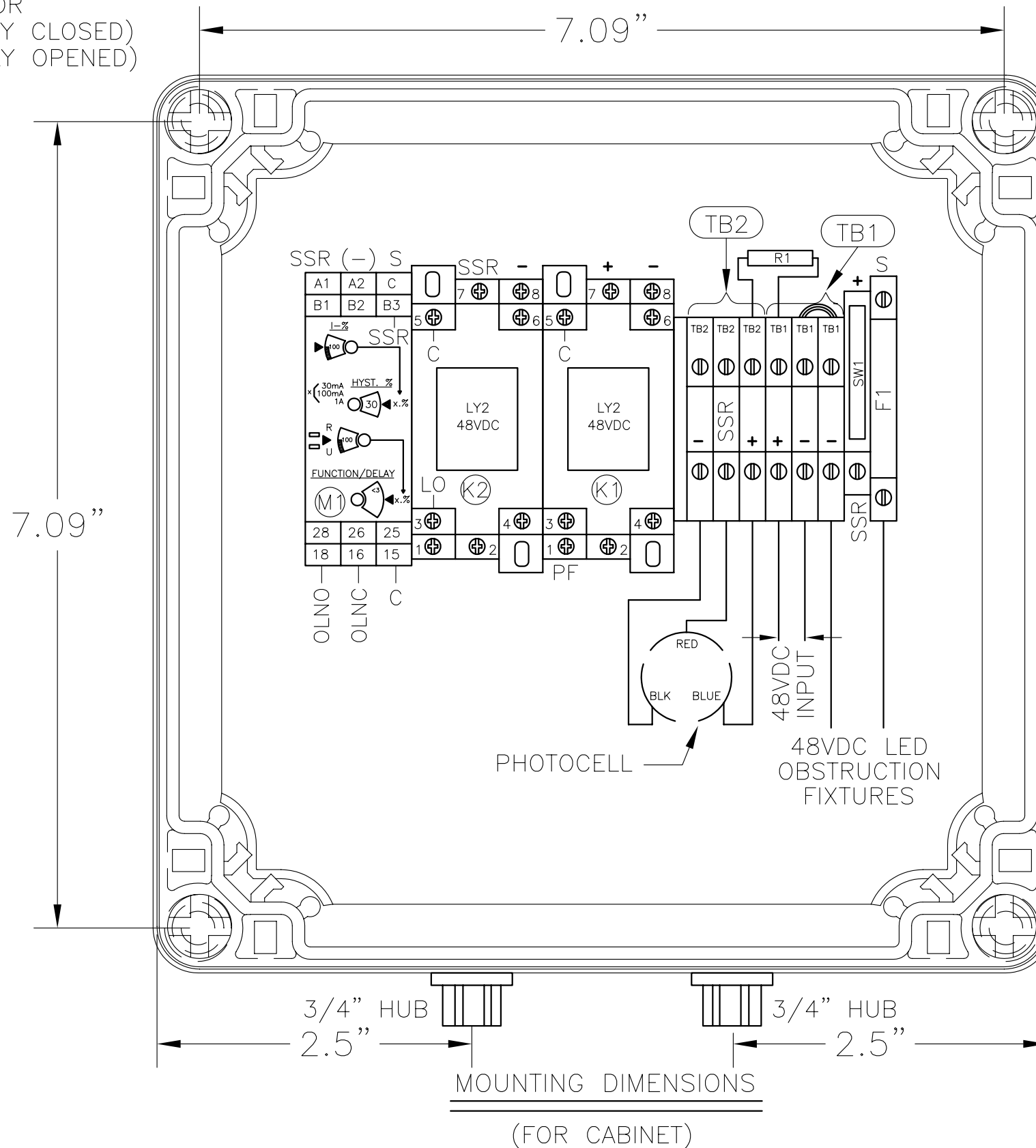
RETURN ADDRESS: \_\_\_\_\_

\_\_\_\_\_

CUSTOMER ALARM POINTS

- OLNC = OBSTRUCTION LIGHT ALARM (NORMALLY CLOSED)
- OLNO = OBSTRUCTION LIGHT ALARM (NORMALLY OPEN)
- C = ALARM COMMON
- LO = LIGHTS "ON" INDICATOR
- PFNC = POWERFAIL (NORMALLY CLOSED)
- PFNO = POWERFAIL (NORMALLY OPENED)

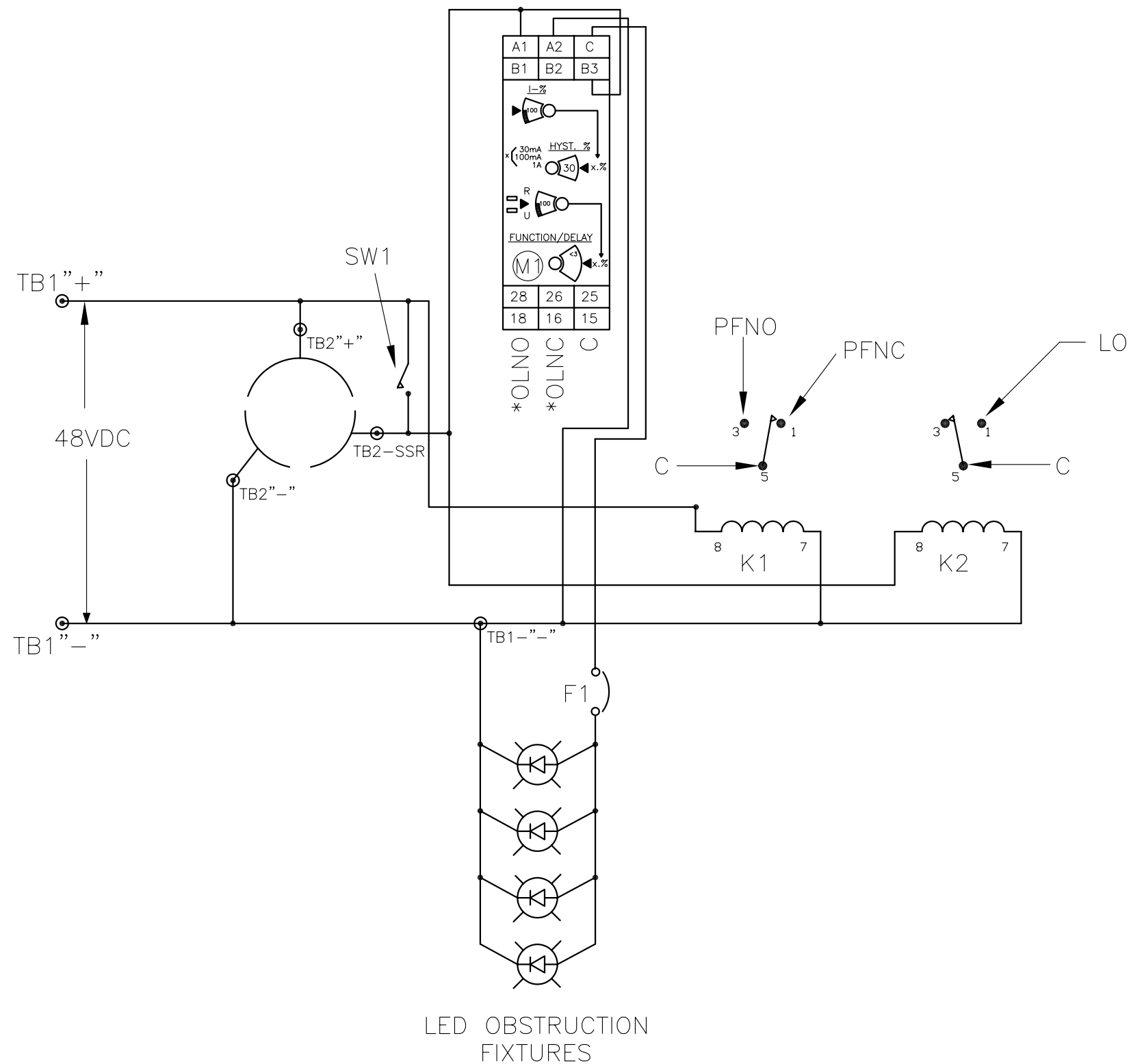
**!!WARNING!!**  
**VERIFY POLARITY CONNECTIONS ON THE INPUT AND OUTPUT.**  
**NEGLIGENCE WILL RESULT IN FAILURE OF THE PHOTOCELL**  
**AND/OR LED SIDELIGHT. THIS WILL VOID YOUR WARRANTY.**



NOTES:

1. NORMAL OPERATING POSITION OF SWITCH SW1 IS IN THE OPEN POSITION.

<b>AOMTSSLED48VDC</b>			
<b>CHASSIS LAYOUT</b>			
APP'D	<b>TWR Lighting, Inc.</b> <i>Enlightened Technology</i>		
CHK'D BY			
ENGINEER			
DRAWN BY E.A.SALAZAR	SHEET SIZE B	SHEET QTY. 1 OF 1	DWG. NO. 1224-R
DATE 03/07/06	SCALE N.T.S.		
The use of non-TWR parts or modifications to original equipment design will void the manufacturer warranty and could invalidate the assurance of complying with FAA requirements as published in Advisory Circular 150/5345-43. NOTICE: The drawings and photographic images contained herein are the sole property of TWR Lighting, Inc. All information contained herein that is not generally known shall be considered confidential except to the extent the information has been previously established. The drawings and photographic images contained herein may not be reproduced, copied or used as the basis for manufacture or sale or promotion or any other purpose without the expressed written permission of TWR Lighting, Inc.			



LED OBSTRUCTION  
FIXTURES

A0MTSSLED48VDC SCHEMATIC LAYOUT			
APP'D	<b>TWR Lighting, Inc.</b> <i>Enlightened Technology</i>		
CHK'D BY			
ENGINEER			
DRAWN BY E.A.SALAZAR	SHEET SIZE B	SHEET QTY. 1 OF 1	
DATE 03/10/06	SCALE N.T.S.	DWG. NO. 1224-S	
<small>The use of non-OEM parts or modifications to original equipment design will void the manufacturer warranty and could invalidate the assurance of complying with FAA requirements as published in Advisory Circular 150/5345-43.  NOTICE: The drawings and photographic images contained herein are the sole property of TWR Lighting, Inc. All information contained herein that is not generally known shall be considered confidential except to the extent the information has been previously established. The drawings and photographic images contained herein may not be reproduced, copied or used as the basis for manufacture or sale or promotion or any other purpose without the expressed written permission of TWR Lighting, Inc.</small>			