

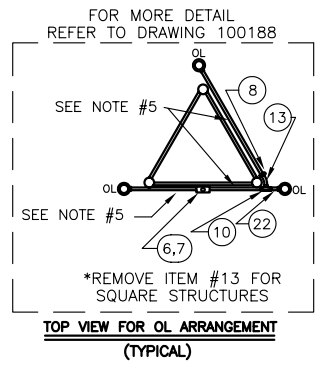
BILL OF MATERIALS

ITEM NO.	QTY.	TWR PART NO.	DESCRIPTION
1	3	BEACON	300 MM BEACON RED
2	6	620PS40P	620 WATT 120 VOLT LAMP
3	6	OL1	3/4" OBSTRUCTION LIGHT
4	6	116A21TS	116 WATT 120 VOLT LAMP
5	3	CGB295SA	3/4" CORD CONNECTOR
6	2	JB5	3/4" JUNCTION BOX
7	3	JB8	1" JUNCTION BOX
8	5	UNY205	3/4" UNION
9	3	UNY305	1" UNION
10	4	T27CG	3/4" CONDULET W/COVER AND GASKET
11	2	T37CG	1" CONDULET W/COVER AND GASKET
12	1	EL3490	3/4" 90° SHORT ELBOW
13	2	EL3430	3/4" 30° ELBOW
14	2	EL190	1" 90° ELBOW
15	3	5012902	3/4" BREATHER
16	2	SS10012	WRAPLOCK
17	2	PIPDOP	4 oz. PIPE DOPE
18	16	A314	3/4" CONDUIT LOCKNUTS
19	9	A315	1" CONDUIT LOCKNUTS
20	3	RF32	1" TO 3/4" REDUCER
21	16	CPLG34	3/4" GALVANIZED COUPLING
22	8	N34T3	3/4" x 3" NIPPLE
23	6	N34T6	3/4" x 6" NIPPLE
24	6	N34T12	3/4" x 12" NIPPLE
25	6	N34T24	3/4" x 24" NIPPLE
26	4	N34T36	3/4" x 36" NIPPLE
27	6	SLPIGTAIL25	25' SIDELIGHT PIGTAIL
28	1	AA2/3	AA2/3 CONTROLLER

ITEM NUMBERS #30-#38 ARE NOT INCLUDED IN THE KIT BUT ARE AVAILABLE UPON REQUEST, AND REQUIRED FOR INSTALLATION.

29	-	CONDUIT34	3/4" CONDUIT (1/2 TOWER HT.)
30	-	CONDUIT1	1" CONDUIT (1/2 TOWER HT. + 30'/9M)
31	-	4THHNWHT	#4 THHN WHT. WIRE (TOWER HT.+40'/12M)
32	-	6THHNBK	#6 THHN BLK. WIRE (TOWER HT.+40'/12M)
33	-	8THHNWHT	#8 THHN WHT. WIRE (1/2 TOWER HT.+40'/12M)
34	-	8THHNBK	#8 THHN BLK. WIRE (1/2 TOWER HT.+40'/12M)
35	-	8THHNBK	#8 THHN BLUE WIRE (1/2 TOWER HT.+40'/12M)
36	-	12THHNRED	#12 THHN RED WIRE (3/4 TWR HT.+40'/12M)
37	-	12THHNYLW	#12 THHN YLW. WIRE (1/4 TWR HT.+40'/12M)

* = ITEMS NOT SHOWN



NOTES:

- 1) CONDUIT SIZE BASED ON USING TYPE THHN WIRE.
- 2) USE RIGID GALVANIZED STEEL CONDUIT.
- 3) BREATHERS ALLOW FOR CIRCULATION OF AIR TO PREVENT CONDENSATION.
- 4) MIDDLE LEVEL BEACONS CAN NOT BE MOUNTED AT LESS THAN 200'/61M.
- 5) ITEMS #22-#26 TO BE USED IN VARIOUS COMBINATIONS FOR OL1 RUN. EXTRA NIPPLES TO BE CUT TO FIT IF FACE WIDTH IS LARGER THAN 6".
- 6) USE ITEM #21 TO COUPLE CONDUIT NIPPLES. APPROPRIATE OL1 EXTENSION IS 12".

LK1A2/3 TOWER LIGHTING KIT W/NO BOOST
(TOWERS 351'/107M TO 400'/122M)

TWR Lighting, Inc.

08/07/98	(D)	CHG. ITEM #33, #35
04/30/96	(C)	UPDATED B.O.M.
9/14/94	(B)	REWORK KIT PARTS
2/25/94	(A)	ADDED MATERIALS
DATE:	LTR.	REVISION

APP'D	ENGINEER	CHK'D BY
DRAWN BY	E.A.SALAZAR	SHEET SIZE SHEET QTY.
DATE	4/16/93	B 1 OF 1
SCALE	N.T.S.	DRAWING NO.
		261-31

NOTICE: This drawing is the property of TWR Lighting, Inc. All information contained herein that is not generally known shall be confidential except to the extent the information has been previously established. This drawing may not be reproduced, copied or used as the basis for manufacture or sale without written permission.